

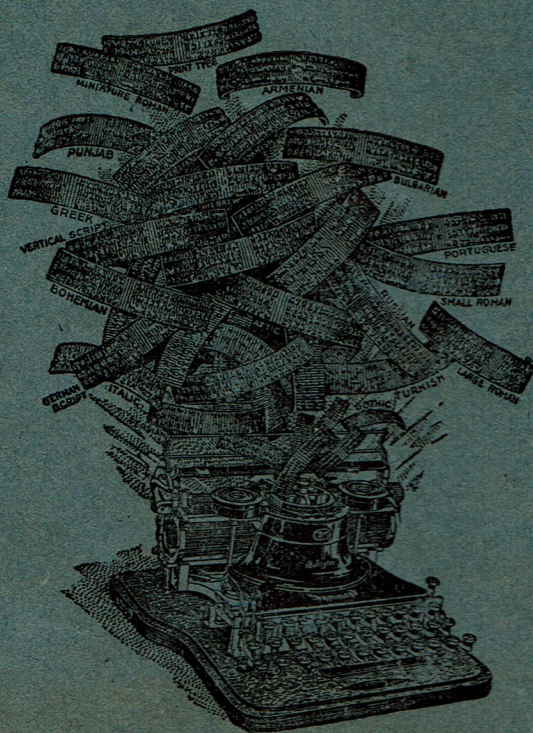
"If it isn't a Hammond, it isn't a
Complete Typewriter."

ALL LANGUAGES IN ALL TYPES
WRITTEN ON ONE
MULTIPLEX HAMMOND

Any two styles of type, or two to five lan-
guages on the machine
AT ONCE.

"JUST TURN THE KNOB"
and change *instantly* from one to the other

Any other types or languages substituted
in a few seconds



HAMMOND TYPES

HAMMOND INTERCHANGEABLE TYPE PLATE

— FOR —

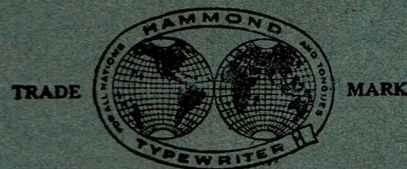
THE BUSINESS MAN

THE SCIENTIFIC MAN

THE LITERARY MAN

THE LIBRARIAN

THE LINGUIST



IDEAL Keyboard Types, Pages 14 to 31
UNIVERSAL Keyboard Types, Pages 32 to 56

PRICES

THREE LINE TYPE PLATES \$3.00
FOUR LINE TYPE PLATES \$3.50

**THE HAMMOND TYPE-
WRITER COMPANY**

Factory and General Offices: 69TH TO 70TH STS.
EAST RIVER, NEW YORK, U. S. A.

The
Hammond Typewriter
Company

FOUNDED 1880

Factory and General Offices
Foot of East 69th Street
New York, U. S. A.

New York Cable Address:
TYPANGLO-NEW YORK

London Cable Address:
TYPANGLO-LONDON

BRANCHES AND DEALERS

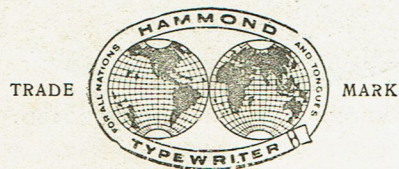
IN THE
PRINCIPAL CITIES OF
THE WORLD

Introduction---page B
Introduction (français) page D
Introducción---página F
Introdução---pagina H
Einleitung---seite J

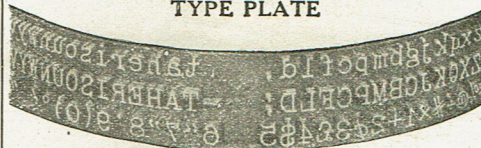
DEALERS EVERYWHERE

HAMMOND TYPES

FOR
EVERY BUSINESS
EVERY PROFESSION
EVERY LANGUAGE
EVERY SCIENCE
LITERATURE
THE LIBRARY
THE LABORATORY



HAMMOND INTERCHANGEABLE
TYPE PLATE



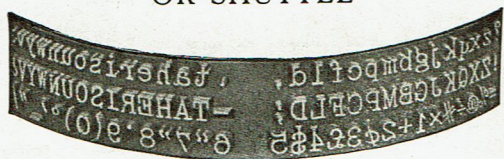
ACTUAL SIZE

THE HAMMOND
TYPEWRITER CO.

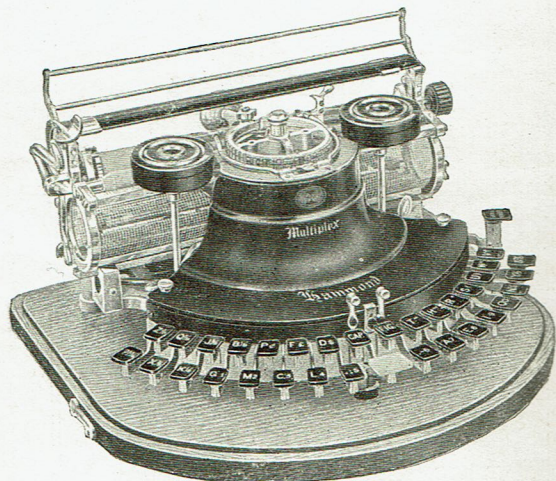
FACTORY AND GENERAL OFFICES

Foot of East 69th Street
NEW YORK, U. S. A.

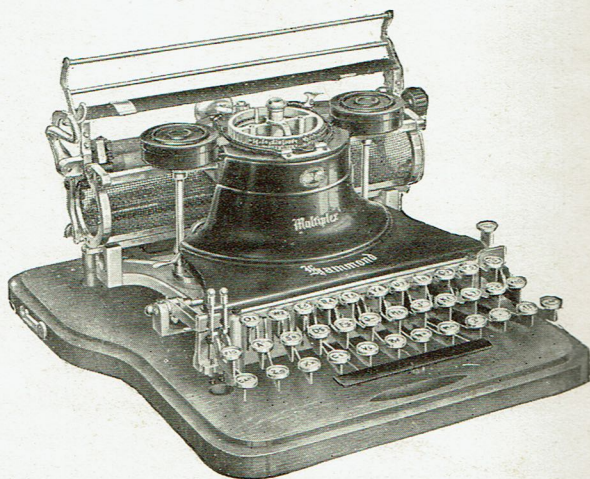
VISIBLE WRITING HAMMOND TYPE PLATE OR SHUTTLE



EXACT SIZE



HAMMOND VISIBLE—IDEAL KEYBOARD



HAMMOND VISIBLE—UNIVERSAL KEYBOARD

(A)

INTRODUCTORY

TO those unfamiliar with the mechanical principles of the Hammond Typewriter, we present the following brief explanation: The 90 to 120 characters of the various types and languages are cast in true alignment in three or four rows upon a curved plate of vulcanite called the shuttle or type plate.

The shuttle, or type plate, may be compared to a portion of the tire of a wheel, which is, however, loose upon the wheel and travels back and forth upon it.

The backing for the type plate is a cast iron ring, called the "anvil," and may be compared to a wheel having a slot in the center of its face in which the steel web of the type plate slides from side to side. This forms a perfect guide for the type plate in its horizontal movements to and fro.

The anvil is stationary and firmly fixed to a vertical shaft by which it may be raised by the shift keys to bring either row of type to the printing position.

The depression of the key corresponding to the character to be printed brings that character on the type plate into position by means of the type plate arm and a series of index pins.

The stroke of the hammer is at that instant received upon the paper by means of a lever which releases the hammer spring and the carriage, and forces the paper against the desired character on the face of the type plate.

The perfect alignment and uniformity of the impression, and the great variety of type (over three hundred fifty sets), together with the ease and rapidity of its operation, are the unique principles which put the Hammond in a class by itself and mark its superiority over all other machines.

(B)

**"AN EXAMINATION OF THE MULTIPLEX
IS AN EDUCATION IN TYPEWRITERS."**

**UNIQUE AND EXCLUSIVE FEATURES
OF THE
MULTIPLEX HAMMOND**

TWO DIFFERENT STYLES OF TYPE, or *two to five languages*, are on the machine AT ONCE.

"JUST TURN THE KNOB" to change *instantly* from one to the other.

Any other types or languages can be substituted in a few seconds.

Complete visibility.

New Corrugated Double Type Speed Anvil.

Ball bearing carriage.

New Line Space Lever, making easy the return of the Carriage.

Ribbon Shift arranged to reverse—Right, Left and Neutral—Neutral for Mimeograph stencil cutting.

Delicacy of touch and quickness of action.

Durability and Simplicity of Construction.

LIGHTNESS AND PORTABILITY combined with strength.

Perfect stencil cutting—ribbon need not be removed.

The Aluminum Light Weight Multiplex weighs only **11½ pounds.**

GREATEST SPEED.

INTRODUCTION

POUR ceux qui ne connaissent pas les principes mécaniques de la machine à écrire Hammond, nous donnerons les explications suivantes.

Les 90 à 120 caractères des diverses langues que l'on peut écrire sur cette machine, sont coulés, dans un alignement parfait, en trois ou quatre rangées, sur une planche courbée qu'on appelle "porte-caractères."

Ce porte-caractère peut être comparé à une partie de la bande d'une roue qui tourne sur celle-ci d'un coté à l'autre d'une manière détachée.

La pièce qui soutient le porte-caractère a la forme d'un anneau ayant au milieu de sa surface une rainure dans laquelle le moyeu du porte-caractère glisse d'un coté à l'autre. Ceci donne un guide parfait au porte-caractère dans son mouvement horizontal.

L'enclume est fixée solidement sur un arbre vertical par lequel elle est soulevée de façon à mettre les caractères qui se trouvent sur le porte-caractère en position d'imprimer.

L'abaissement de la touche qui gouverne le caractère qu'on veut imprimer, place ce caractère en position par l'action de la bielle du porte-caractère et par une série de chevilles de guide.

Le coup du marteau est porté à ce moment sur le papier par le moyen d'un levier qui déclenche le ressort du marteau et du chariot, pressant le papier contre le caractère désiré sur la face du porte-caractère.

L'alignement parfait et l'uniformité absolue de l'impression joints à la grande variété des types—plus de 350—et aussi la facilité et la rapidité de l'opération, sont les principes qui rendent cette machine unique dans son genre et marque sa supériorité sur toutes les autres machines à écrire.

**“Si votre machine n’est pas une
Hammond, elle n’est pas une machine
à écrire complète.”**

Points de superiorité exclusifs
de la
MULTIPLEX HAMMOND

Deux genres différents de caractères, pouvant écrire de deux à cinq langues, sont toujours dans la machine; il suffit de faire tourner un bouton pour changer instantanément de l’un à l’autre.

On peut substituer d’autres caractères ou d’autres langues dans quelques secondes.

Visibilité complète.

Nouvelle enclume ridée rapide à double caractères.

Chariot monté sur billes.

Nouveau levier d’espacement et nouveau levier de déclanchement sur le devant de la machine.

Impression uniforme, que la touche soit légère ou lourde.

Changement de direction du ruban de façon qu’il marche à droite ou à gauche ou qu’il reste au milieu—cette dernière position permettant de couper des feuilles de cire—“stencils”—pour les travaux miméographiques.

Delicatesse de toucher et rapidité d’exécution.

Durabilité et simplicité de construction.

Légereté et portabilité, jointes à la solidité.

Mécanisme parfait pour faire des “stencils” pour le miméographe, sans être nécessaire d’enlever le ruban.

Écriture sur papier de tous formats.

Le modèle léger d’aluminium ne pèse que 11 livres et demie.

INTRODUCCION

Para el buen gobierno de aquellos que desconocen los principios mecánicos de la Máquina de Escribir Hammond, damos á continuación una breve explicación: Los 90 á 120 tipos, en los diversos idiomas que se escriben en esta máquina, son fundidos, están en perfecta alineación y constan de tres ó cuatro hileras montadas en una plancha curva de vulcanita, llamada “placa porta-tipos.”

La placa porta-tipos puede compararse á una parte de la llanta de una rueda que vaya floja alrededor de esta verificando un movimiento de ida y vuelta.

Tiene el porta-tipos por respaldo una fuerte anilla de hierro fundido, llamada “yunque” que puede compararse á una rueda con ranura en el centro de su superficie exterior, en cuya ranura corre la plancha del porta-tipos en su movimiento horizontal de un lado á otro.

El yunque se halla fijo, adherido firmemente á un eje vertical, por medio del cual se puede levantar á fin de poner cualquiera de las hileras de tipos en posición de imprimir.

Cuando se oprime le tecla correspondiente á la letra que se quiere imprimir, se pone dicha letra en la posición debida por medio del brazo del porta-tipos y una serie de chavetas de guia.

En ese momento el martillo produce la impresión por medio de una palanca que deja libre el muelle del martillo y el carro, aplicando el papel contra el tipo que se halla sobre la superficie del porta-tipos.

La alineación perfecta y la uniformidad de la impresión, unidas á la gran variedad de los tipos—ya hay más de 350—además de la facilidad y rapidez que caracterizan su funcionamiento. son el resultado de los principios mecánicos que colocan á la Hammond en una clase exclusiva y marcan su superioridad sobre todas las demás máquinas de escribir.

“Si no es una Hammond, no es una máquina de escribir completa.”

Características únicas y exclusivas de la máquina MULTIPLEX HAMMOND

DOS CLASES DE LETRA, ó dos á cinco idiomas distintos, están siempre en la máquina. No hay más que dar vuelta á un boton para cambiar *instantáneamente* de un tipo, ó de un idioma á otro.

Pueden sustituirse otros tipos, ú otros idiomas, en un momento.

Escritura completamente visible.

Nuevo yunque acanalado de doble tipo para la escritura rápida.

El carro montado sobre bolas.

Nueva palanca de espaciar, haciendo fácil la vuelta del carro á su primera posición.

Nuevos retenes marginales y boton desconector de los mismos, en la parte delantera de la máquina.

UNIFORMIDAD ABSOLUTA EN LA IMPRESION, lo mismo con un golpe fuerte sobre las teclas que con un golpe ligero.

Mecanismo de cambiar la dirección de la cinta para que esta corra hacia la derecha ó la izquierda ó se quede en medio, siendo esta última posición apropiado para hacer estarcidos mimeográficos.

Pulsación suave y rapidez de funcionamiento.

Durabilidad y sencillez de construcción.

LIGEREZA Y PORTABILIDAD unidas á gran solidez y resistencia.

Mecanismo perfecto para hacer estarcidos mimeográficos—no es necesario quitar la cinta.

Escribe en papel de CUALQUIER ANCHO.

El modelo de aluminio pesa solamente 11½ libras.
LA MAYOR VELOCIDAD,

INTRODUÇÃO

DAMOS a seguinte curta explicação para áquelles que não estão familiarisados com os principios mechanicos da machina de escrever “Hammond”: Os 90 a 120 caractéres de diferentes typos ou linguas são fundidos e estão exactamente alinhados em trez ou quatro linhas sobre uma placa curva de vulcanite chamada a lançadeira ou placa dos typos.

A lançadeira, ou placa dos typos, póde ser comparada á uma parte do pneumatico de uma roda que esteja frouxa sobre a roda de modo a poder correr sobre a mesma para diante e para traz.

A placa dos typos appoia-se sobre um aro de ferro fundido, chamado a “BIGORNA.” Póde ser comparada a uma roda tendo em seu centro uma fenda onde o rebordo de aço da placa dos typos possa escorregar de uma extremidade á outra. A placa dos typos acha-se assim perfeitamente guiada em seus movimentos horisontaes nos dois sentidos.

A bigorna é fixa e fortemente unida á uma haste vertical por intermedio da qual é levantada quando se appoia nas teclas de mudança (shift keys) trazendo este movimento cada linha de typos no posição de impressão.

O abaixar da tecla correspondente ao caracter que se quer imprimir traz este caracter em posição sobre a placa dos typos por meio do braço da placa dos typos de uma serie de pernos de direção.

O papel recebe no mesmo instante o golpe do martello por meio de uma alavanca que substitue a mola do martello e o carro e que applica sobre a face da placa dos typos o papel sobre o caracter desejado.

O alinhamento perfeito, a uniformidade de impressão, a grande variedade de typos (mais de trezentos e cincoenta grupos), e a facilidade e rapidez do movimento são os principios particulares que collocam a machina Hammond n’uma classe a parte e indica a sua superioridade sobre todas as outras machinas.

**“Se não é uma Hammond, não é uma
machina de escrever completa.”**

**Caracteristicos particulares a
exclusivos da Multiplex.**

Póde-se ter ao mesmo tempo na machina dois
estyls diferentes de typos ou de duas a cinco linguas;
“basta torcer o botão” para passar instantaneamente de
uma a outra. Em poucos segundos, póde-se substituir
qualquer outro typo ou lingua.

Visibilidade completa.

Bigorna em metal ondulado do novo typo de veloci-
dade dupla.

Carro montado sobre esferas.

Nova chave de espaçar as linhas tornando facil que
o carro volte para traz.

Novos calços marginaes e desprendimentos na
frente da machina.

TYPO UNIFORME DE IMPRESSÃO com
uma pressão sobre as teclas, quer forte, quer fraca.

Chave da fita disposta para reversão—para direita,
para esquerda, e posição neutra—a neutra para a im-
pressão em placas de cêra.

Delicadeza de contacto e rapidez de movimento.

Duração e simplicidade de construcção.

POUCO PESO E TRANSPORTABILIDADE
reunidos á solidez.

Impressão perfeita sobre cêra—nao é preciso retirar
a fita.

Escreve sobre QUALQUER LARGURA DE
PAPEL,

A Multiplex Leve em Aluminio pesa sómente 11½
libras.

A MAIOR VELOCIDADE.

**“Wenn es nicht eine Hammond ist, dann
ist es keine vollkommene Schreib-
maschine.”**

Eigenartige und exclusive Vorzüge des Multiplex.
Zwei verschiedene Schriftarten oder von zwei bis fünf
Sprachen gleichzeitig in der Maschine.

Man muss nur den Knopf drehen, um von einer
Schrift oder einer Sprache augenblicklich zu einer an-
deren ueberzugehen. Irgend eine andere Schrift oder
andere Sprache kann innerhalb weniger Sekunden ein-
geschaltet werden.

Vollständige Sichtbarkeit.

Neuer, corrugierter, doppelte Schriftschnelligkeit
erzeugender, Amboss.

Auf Bällen laufender Wagen.

Neuer Linien-abstandhebel, der die Rückkehr des
Wagens erleichtert.

Neue Band-Umschaltung—nach rechts, links oder
neutral—Neutral für Schablonenschneiden.

Leichter Anschlag und Aktionsschnelligkeit.

Dauerhaftigkeit und Einfachheit der Konstruktion.

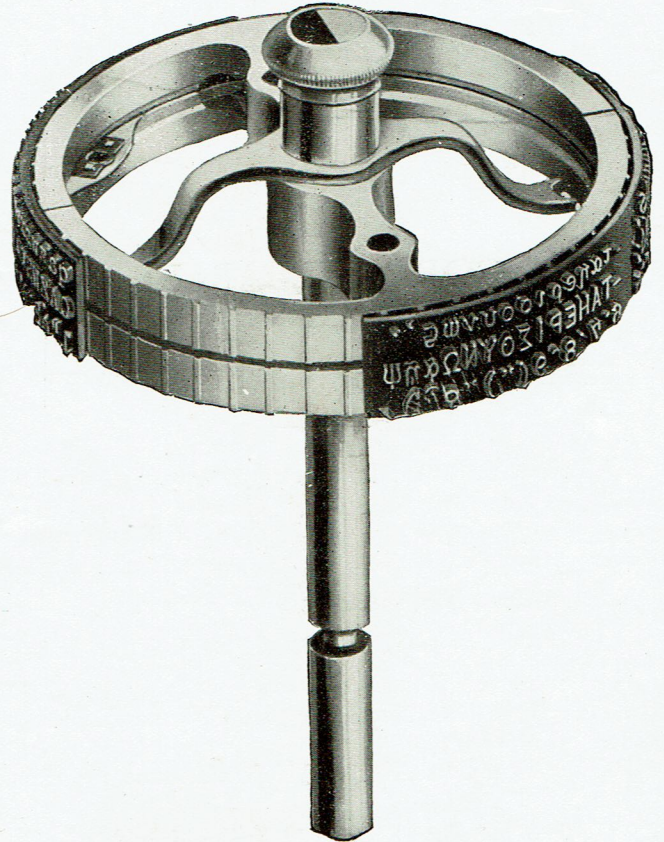
Leichtig und Tragfähigkeit verbunden mit Stärke.

Vollkommener Schablonenschneider—Ausschaltung
des Bandes nicht notwendig.

Der Aluminium Leicht-Gewicht Multiplex wiegt
nur 11½ Pfund.

Höchste Schnelligkeit.

THE NEW "DOUBLE-TYPE-SPEED-ANVIL"



THE NEW MULTIPLEX HAMMOND ANVIL

The strong feature of this anvil is that **TWO TYPES**, or from **TWO to FIVE** different languages, are carried on the machine at once.

The anvil is so constructed that two type plates are carried at once. One may be Roman type and the other *Italics*, or one may be English-Spanish and the other Dutch,-German-French-English, or any other types or languages.

"JUST TURN THE KNOB" and change *instantly* from one to the other.

This new anvil is corrugated thus doing away with friction and enabling the type plates to slide back and forth with the greatest ease. This makes possible a greatly increased speed and a lighter touch.

The **GREATEST SPEED** attainable on any typewriter can be reached on the

MULTIPLEX HAMMOND

HAMMOND TYPE PLATES

Classified by Language

CODE SYLLABLES

FOR

TELEGRAPHIC OR CABLE MESSAGES

In the Numerical Index on pages 8 to 12, will be seen opposite each Type Plate a Code Syllable of three letters. Any three of these syllables can be combined to form one code word making it possible to order three different type plates with a single *cable* word.

Thus the word KEBROBMUC would be translated as follows:—

KEB—Type Plate No. 23, Medium Roman, English, Universal.

ROB—Type Plate No. 32, Medium Roman, French, Universal.

MUC—Type Plate No. 68A, Italic, Spanish, Universal.

	Ideals Page	Universals Page
Arabic	55	55
Argentine Government	54	54
Armenian	54	54
Bohemian	14	32
Braille	15	32
Bulgarian	15	32
Chilian	15	32
Chemical English		37
Croatian	16	33
Danish	16	33, 34
Diacritical	18	38
Display Type	57	57
Dutch	16, 17	34, 35
English	17, 20	35, 39
Esperanto	20	40
Finnish (Swedish-Finnish)	31	51, 52, 53
French	20, 21, 54, 55	40, 41, 42, 54, 55
Gaelic	55	55
German	21, 22, 23,	42, 43, 44 45
Greek	23, 24	45
Hungarian	24	45, 46
Irish	55	55
Italian	24, 25	46, 47
Library	19	37
Mexican [Spanish]		51
Mathematical	25	47, 48
Medical	19	37
Multigraph [Pica] English	20	39
Multigraph [Pica] German	23	45
Multigraph [Pica] Spanish	30	
Norwegian		33, 34
Polish	25, 28	48
Polyglot		53
Portuguese	28	48, 49
Print Type	56	56
Punjabi (Turumukhi Characters)	55	55
Reversible	31	55
Roumanian	28	49
Russian	28, 29	49, 50
Servian	29	50
Sikh [Gurumukhi Characters]	55	55
Sindhi [Gurumukhi Characters]	55	55
Spanish	29, 30	50, 51
Swedish (Finnish-Swedish)	31	51, 52, 53
"Shuttles which can be used on both the Ideal and Universal Machines	54, 55	54, 55
Turkish Persian	55	55
Hebrew Yiddish English	31	55

See List of Hammond Supplies page 60

HAMMOND TYPE PLATES

Numerical Index

See explanation of Code

	Page	Code Syllables
1—Medium Roman, Fractions, English, Ideal.....	17	bab
2—Small “ “ “ “	17	beb
3—Large “ “ “ “	19	bib
3A— “ “ “ “	19	bob
3B— “ “ “ “	19	bub
4—Gothic, Fractions, English, Ideal.....	19	cab
4A— “ Spanish, Ideal	30	ceb
5—Caps and Small Caps, Fractions, English, Ideal.....	19	cib
5A— “ “ “ Spanish, Ideal	29	cob
5B— “ “ “ “	30	cub
6—Italic, Fractions, English, Ideal.....	20	cha
7—Greek, Ideal	24	che
8—Small Greek, four line, Ideal.....	23	chi
9—Attic, Fractions, English, Ideal.....	19	cho
10—Medium Roman, English, Ideal.....	17	chu
10A— “ “ “ “	18	dab
10B— “ “ “ “	18	deb
11— “ “ German, “ Old Style.....	21	dib
11A— “ “ Dutch, “	16	dob
12—Large “ German, “ Old Style.....	21	dub
12A— “ “ Dutch, “	16	fab
12B— “ “ German, “	22	feb
12C— “ “ Croatian, “	16	fib
13—Italic, German, Ideal.....	22	fob
13A— “ Dutch, “	17	fub
13B— “ German, “	22	gab
14—Medium Roman, French, Ideal.....	20	geb
14A— “ “ Italian, “	25	gib
15—Italic, French, Ideal.....	21	gob
15A— “ Italian, “	25	gub
16—Medium Roman, Spanish, Ideal.....	29	hab
16A— “ “ Chilian, “	15	heb
16B— “ “ Spanish, “	29	hib
17—Italic, Spanish, Ideal.....	30	hob
17A— “ Chilian, “	15	hub
17B— “ Spanish, “	30	jab
18—Medium Roman, Medical, English, Ideal.....	19	jeb
19— “ “ Diacritical, “ “	18	jib
20—German Text, Ideal.....	23	job
21—Medium Roman, English, Ideal.....	18	jub
22— “ “ Swedish-Finnish, Ideal	31	kab
23— “ “ English, Universal.....	36	keb
23A— “ “ “ “	36	kib
23B— “ “ “ “	36	kob
23C— “ “ “ “	36	kub
23D— “ “ “ “	36	lab
23E— “ “ “ “	36	leb
23F— “ “ “ “	36	lib
23G— “ “ “ “	37	lob
24—Small “ “ “ “	35	lub
24A— “ “ “ “	35	lab
24B— “ “ “ “	35	mab
24C— “ “ “ “	35	meb
24D— “ “ “ “	36	mib
24E— “ “ “ “	36	mob
25—Large “ “ “ “	37	mub
25A— “ “ “ “	37	nab
25B— “ “ “ “	37	neb
25C— “ “ “ “	38	nib

See explanation of Code

	Page	Code Syllables
26—Small Roman, Fractions, English, Universal.....	39	nob
27—Caps and Small Caps, English, Universal.....	38	nub
27A— “ “ “ Italian, “	47	pab
27B— “ “ “ “	47	peb
28—Law Italic, English, Universal.....	39	pib
28A— “ “ Spanish “	51	pob
29—Large, Russian, Universal.....	49	pub
29A— “ “ “ “	49	qab
29B— “ “ “ “	50	qeb
29C— “ “ Bulgarian, “	32	qib
30—Medium Roman, Polish, Universal.....	48	qob
31— “ “ Russian, Universal.....	49	qub
31A— “ “ “ “	49	rab
31B— “ “ “ “	49	reb
31C— “ “ Bulgarian, “	32	rib
32— “ “ Roman, French, Universal.....	43	rob
32A— “ “ “ “	40	rub
32B— “ “ “ Italian, “	46	sab
32C— “ “ “ Roumanian, “	49	seb
32D— “ “ “ “	40	sib
32E— “ “ “ French, German, English, Universal.....	41	sob
33— “ “ “ Spanish, Universal.....	51	sub
33A— “ “ “ Chilian, “	32	tab
33B— “ “ “ Spanish, “ (Mexican-Spanish Keyboard)	51	teb
33C— “ “ “ “	51	tib
33D—Spanish, French, English	53	tob
34—Medium Roman, German, “	42	tub
34A— “ “ “ Dutch, “	31	vab
34B— “ “ “ Croatian, “	33	reb
34C— “ “ “ Fractions, German, Universal.....	42	vib
34D— “ “ “ “ Dutch, “	34	vob
34E—Lithuanian, English, German, Croatian	53	vub
35—Italic, Russian, Ideal	29	wab
35A—Italic, Bulgarian, Ideal.....	15	web
36—Small Roman, German, Ideal.....	21	wib
36A— “ “ “ Dutch, “	16	wob
36B— “ “ “ German, “	21	wub
37— “ “ “ English, “	17	xab
37A— “ “ “ “	17	xeb
38—Medium “ Swedish-Finnish, Ideal	31	xib
39—Large “ French, Special, Ideal.....	21	xob
40—Medium “ Fractions, English, Universal.....	37	xub
41—Small “ “ “ “	36	yab
42—Italic, Russian, Universal.....	50	yeb
42A— “ “ “ “	50	yib
42C— “ “ Bulgarian, “	32	yob
43—Medium Roman, Special Medical, English, Universal.....	37	yub
43A— “ “ “ Medical, English, Universal.....	37	zab
44— “ “ “ Hungarian, Ideal	24	zeb
45—Large “ Argentine Government, Ideal or Universal	54	zib
46— “ “ “ Spanish, Ideal	29	zob
46A— “ “ “ Chilian, “	15	zub
46B— “ “ “ Spanish, “	29	bac
47— “ “ “ “ Universal.....	51	bec
47A— “ “ “ Chilian, “	33	bic
48—Medium Roman, Fractions, English, Ideal	18	boc
48A— “ “ “ “ “ “	18	buc
48B— “ “ “ “ “ “	18	cac
48C— “ “ “ “ “ “	19	cec
49—Medium Russian, Ideal	28	cic
49A—Medium Bulgarian, Ideal	15	coc
50—Large Roman, German, Universal.....	43	cuc
50A— “ “ “ Dutch, “	31	duc
50B— “ “ “ Fractions, German, Universal.....	43	dec
50C— “ “ “ Dutch, “	31	dic
51— “ “ “ English, Ideal	19	doc
51A— “ “ “ “	19	duc
52— “ “ “ Fractions, English, Universal.....	38	fac

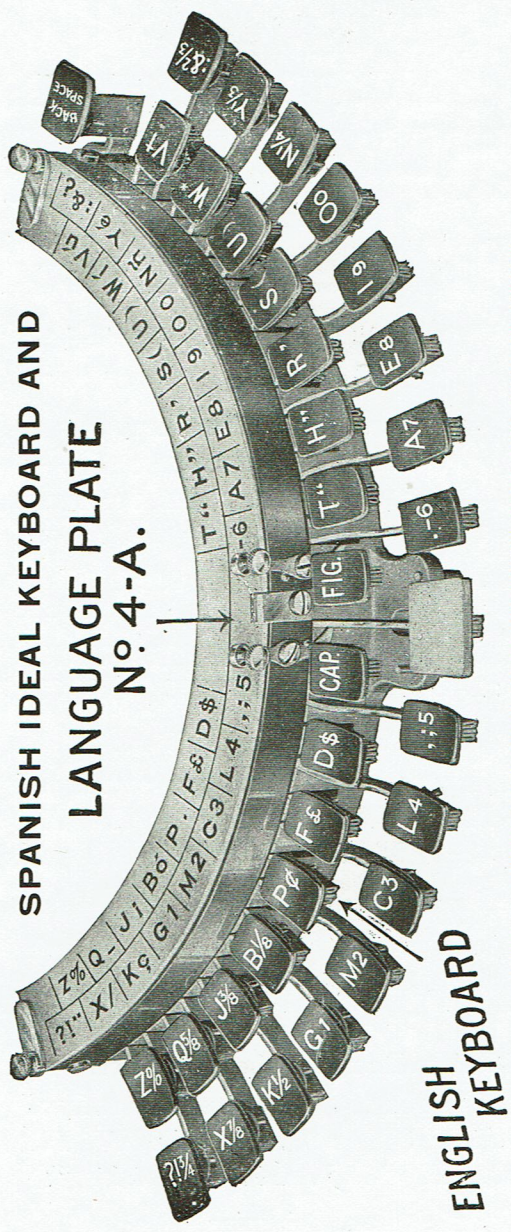
See explanation of Code

	Page	Code	Syllables
53—Irish, Gaelic, Universal or Ideal	55	fec	
54—Medium Roman, Bohemian Ideal	14	fic	
55— “ “ Swedish-Finnish, Universal	52	foc	
55A— “ “ “ “	52	fuc	
55B— “ “ “ “	52	gac	
55C—Medium Roman, Fractions, Swedish-Finnish, Universal	52	gac	
55D— “ “ Danish-Norwegian, Universal	33	gic	
55E— “ “ German, Universal, (New Orthography)	42	goc	
55F— “ “ Fractions, German, Univ., (New “)	43	guc	
56— “ “ Hungarian, Universal, Old Style	45	hac	
57— “ “ “ Ideal	24	hec	
58— “ “ Croatian, “	16	hic	
59—German Text, Universal	43	hoc	
60—Gothic, Italic, English, Ideal	20	huc	
60A— “ “ Spanish, “	30	jac	
60B— “ “ “ “	30	jec	
61—Small Roman, French, “	20	jic	
61A— “ “ Italian, “	24	joc	
62—Large “ French, “	21	juc	
62A— “ “ Italian, “	25	kac	
63—Medium “ Portuguese, Ideal	28	kec	
63A— “ “ “ “	28	kic	
63B— “ “ “ “	28	koc	
64—Italic, Hungarian, Universal, Old Style	46	kuc	
65—Small Roman, Spanish, Ideal	29	lac	
65A— “ “ Chilian, “	15	lec	
65B— “ “ Spanish, “	29	lic	
66— “ “ “ Universal	50	loc	
66A— “ “ Chilian, “	32	luc	
66B— “ “ Spanish, “	51	mac	
67— “ “ French, “	40	mec	
67A— “ “ Italian, “	46	mic	
68—Italic, English, Universal	39	moc	
68A— “ Spanish, “	51	muc	
69—Large Roman, French, Universal	41	nac	
69A— “ “ Italian, “	46	nec	
70—Vertical Script, English, Ideal	20	nic	
71—Small Roman, German, Universal	42	noc	
71A— “ “ Dutch, “	34	nuc	
71B— “ “ Croatian, “	33	pac	
71C— “ “ German, “ (New Orthography)	42	pec	
71D— “ “ Fractions, German, Universal	42	pic	
71E— “ “ “ “ (New Orthography)	42	poc	
71F— “ “ “ Dutch, “	34	puc	
73—Medium Roman, Italian, Universal	46	qac	
74—Gothic Italic, Hungarian, Ideal	24	qec	
75—Greek, Ideal	24	qic	
76—Gothic Italic, German, Ideal	22	qoc	
76A— “ “ Dutch, “	16	quc	
76B— “ “ German, “	22	rac	
77—Medium Roman, Polish, Ideal	25	rec	
78—Vertical Script, German, “	23	ric	
78A— “ “ Dutch, “	17	roc	
78B— “ “ German, “	23	ruc	
79—Gothic, Italic, French-German, Ideal	21	sac	
80—Vertical Script, English, Universal	39	sec	
80A— “ “ Fractions, English, Universal	39	sic	
81—Armenian, Ideal or Universal	51	soc	
82—English Greek, four line, Ideal	21	suc	
83—Vertical Script, Spanish, Ideal	30	tac	
83A— “ “ Chilian, “	16	tec	
83B— “ “ Spanish, “	30	tic	
84— “ “ German, Universal	45	toc	
84A— “ “ Dutch, “	35	tuc	
84B— “ “ Fractions, German, Universal	45	vac	
84C— “ “ Dutch, “	35	vec	
85— “ “ French, Universal	41	vic	
85A— “ “ Italian, “	47	voc	

See explanation of Code

	Page	Code	Syllables
85—Medium Roman, Bohemian, Ideal	14	yuc	
87— “ “ Fractions, Danish, Ideal	16	wac	
88— “ “ Danish, Ideal	16	wec	
89—Vertical Script, Spanish, Universal	51	wic	
89A— “ “ Chilian, “	33	woc	
90—Italic, Swedish-Finnish, Universal	53	wuc	
90A— “ “ Danish-Norwegian “	34	xac	
91— “ “ Script, German, Ideal	22	xec	
91A— “ “ Dutch, “	17	xic	
91B— “ “ German, “	22	xoc	
92—Medium Roman, Roumanian, Ideal	28	xuc	
93—Small “ Swedish-Finnish, Universal	51	yac	
93A— “ “ “ “	52	yec	
93B— “ “ Danish-Norwegian, “	33	yic	
94—Medium “ English, Ideal	18	yoc	
95A—Hebrew-English, Ideal	31	yuc	
96—Gothic, English, Universal	38	zac	
97— “ “ Italic, Fractions, English, Universal	38	zec	
97A— “ “ Roumanian, Universal	49	zic	
97B— “ “ English, “	39	zoc	
98—Arabic, Ideal-Universal	55	zuc	
100—Display Type, Ideal	57	-bad	
101—Large Roman, Swedish-Finnish, Universal	52	-bed	
101A— “ “ “ “	52	-bid	
101B— “ “ “ “	52	-bod	
101C— “ “ Danish-Norwegian, “	33	-bud	
101D— “ “ German, Universal, (New Orthography)	43	-cad	
101E— “ “ Fractions, German, Univ., (New Orthography)	43	-ced	
102—Italic, German, Ideal	23	-cid	
102A— “ “ “ “	23	-cod	
102B— “ “ Dutch, “	17	-cud	
103—Medium Roman, Portuguese, Universal	48	-dad	
103A— “ “ “ “	48	-ded	
103B— “ “ “ “	48	-did	
104—Italic, French, Universal	41	-dod	
104A— “ “ “ “	41	-dud	
104B— “ “ Italian, “	47	-fad	
105—Small Roman, Esperanto, Ideal	20	-fed	
106—Vertical Script, Portuguese, Ideal	28	-fid	
107—Medium Roman, Chemical, English, Universal	37	-fod	
108— “ “ French, Universal	40	-fud	
108A— “ “ “ “	40	-gad	
108B— “ “ Italian, “	46	-ged	
109—Large “ French, “	41	-gid	
109A— “ “ “ “	41	-god	
109B— “ “ Italian, “	46	-gud	
110—Small “ French, “	40	-had	
110A— “ “ “ “	40	-hed	
110B— “ “ Italian, “	46	-hid	
111—Vertical Script, French, Universal	41	-hod	
111A— “ “ “ “	42	-hud	
111B— “ “ Italian, “	47	-jad	
112—Greek, Universal	45	-jed	
112A— “ “ “ “	45	-jid	
112B— “ “ “ “	37	-jod	
113—Medium Roman, Library, English, Universal	21	-jud	
114— “ “ German, Ideal, (New Orthography)	50	-kad	
115—Large Italic, Russian, Universal	50	-ked	
115A— “ “ “ “	50	-kid	
115B— “ “ “ “	32	-kod	
115C— “ “ Bulgarian, “	32	-kud	
116—Medium Roman, Bohemian, Universal	44	-lad	
117—Italic, German, Universal	41	-led	
117A— “ “ “ “	35	-lil	
117B— “ “ Dutch, “	33	-lod	
117C— “ “ Croatian, “	41	-lud	
117D— “ “ German, Fractions, Universal, (New Orthography)	41	-mad	
117E— “ “ “ “	41	-med	
117F— “ “ Dutch, “	35	-med	

See explanation of Code	Page	Code Syllables
118—Law Italic, English, Ideal.....	20	mid
119—Gothic Italic, German, Universal.....	43	mod
119A— “ “ “ “	44	mud
119B— “ “ Dutch, “	34	nad
119C— “ “ Fractions, German, Univ., (New Orthography)	44	ned
119D—Gothic Italic, Fractions, German, Universal.....	44	nid
119E— “ “ Dutch, “	35	nod
120—Medium Roman, Bohemian, Ideal.....	14	nud
121— “ “ Polish-German, Ideal	25	pad
122—Attic, Diacritical, English, Universal.....	38	ped
123—Large Italic, German, Ideal.....	23	pid
124— “ “ Universal, (New Orthography).....	44	pod
125—Servian, Ideal	29	puđ
126— “ Universal	50	rad
127—Braille, Ideal, (for the Blind).....	15	red
128— “ Universal, (for the Blind).....	32	rid
130—Sindhi, Punjabi or Sikh [Gurumukhi Characters], Universal or Ideal.....	55	sad
131—Small Roman, Argentine Government, Universal or Ideal.....	54	sed
133—Display Type, Universal	57	sed
134—Large Gothic, English, Universal.....	38	sid
134A— “ “ Hungarian, Universal	46	sod
134B— “ “ Swedish-Finnish, Universal	52	sud
134C— “ “ Danish-Norwegian, “	34	tad
134D— “ “ German, Universal, (New Orthography).....	43	ted
134E— “ “ French, “	41	tid
134F— “ “ Italian, “ Old Style.....	47	tod
135—Medium Roman, Mathematical, English, Universal.....	47	tud
135A— “ “ Esperanto, Universal	40	vad
135B— “ “ Mathematical, English, Universal.....	48	ved
135C— “ “ “ “	48	vid
135D— “ “ Esperanto, Universal	40	vod
136—Special Gothic, English, Universal.....	38	vud
137—Medium Roman, French, Belgian Keyboard, Ideal and Universal	54	wad
138—Small Roman, French [Belgian Keyboard], Ideal and Universal.....	54	wed
139—Italic, French, [Belgian Keyboard], Ideal and Universal.....	55	wid
140—Large Roman, French (Belgian Keyboard), Ideal and Univ.....	54	wod
141—Large Roman, Polish, Universal.....	48	wud
142—Medium Roman, Mathematical, English, Ideal.....	20	xad
143—Large Roman, Russian, Universal.....	50	xed
144—Multigraph (Pica) Spanish, Ideal	3*	xid
144A— “ “ English	20	xod
144B— “ “ German, “	23	xud
145— “ “ English, Universal	39	yad
145A— “ “ German, “ (New Orthography).....	43	yed
145B— “ “ French, “	43	yid
150—Italic, Portuguese, Universal.....	49	yod
150B— “ Italian, “	47	yud
150C— “ Polish, “	48	zad
151—Large Roman, Hungarian, Ideal.....	24	zed
152—Small “ “ “	21	zid
153—Gothic, German, Ideal.....	22	zod
153A— “ “ (New Orthography).....	22	zud
153B— “ “ Polish, “	28	baf
153C— “ “ Bohemian	15	bef
154—Medium Roman, Polish, Ideal.....	25	bif
154A— “ “ Bohemian, Ideal	14	bef
155—Small Roman, Polish Ideal.....	25	buf
155A— “ “ Bohemian, Ideal	14	caf
156—Large “ “ Polish, “	28	cef
156A— “ “ Bohemian, “	14	cif
157—Italic, Polish, Ideal	28	cof
157A— “ “ Bohemian, Ideal	13	cuf
158—Minia'are Roman, English, Universal.....	39	daf
158A— “ “ “ “	39	def
159—Small Roman, Portuguese, Universal.....	48	dif
161—Bell Visible Speech Symbol Shuttle.....	55	dof
162—Medium Gothic, English, Universal.....	38	duf
165—English-Yiddish, Universal	55	faf
167—Yiddish, Universal	55	fef
168—Arabic, Ideal-Universal	55	fff
169—Italic, English, Universal	39	fof
170—Print Type, English, Universal	56	fuf
170A— “ “ Spanish, “	56	gaf
170B— “ “ Med. Roman, Spanish, Universal	56	gef
170C— “ “ German, “	56	gif
170D—Med. Roman, Dutch, Universal, Fractions	56	dip
170E— “ “ Print Type, German, New Orthography.....	56	nip
171—Arabic-Persian Turkish	55	tip
172—Dutch-German-French-English	35	mip
173—Med. Roman, Dutch, English, French, German, Ideal.....	31	yip
176D—Print Type, Dutch, Ideal	31	hip



“IDEAL” ARRANGEMENT FOR WRITING ENGLISH AND SPANISH.
 The above illustration is a sample of our regular English keyboard corresponding with our No. 1 shuttle. The Spanish Language plate, No. 4A, is inserted over the name plate to show where the accents are located.
Celluloid Language Plate, 35 cents. Paper Language Plate, 10 cents. Language Plates can be supplied for all keyboards.



IDEAL KEYBOARD TYPES

The succeeding pages display in alphabetical order, according to language, facsimile prints from the faces of the different type plates.

In ordering, specify whether type plate is wanted for Ideal or Universal keyboard, giving language and number of type plate.

PRICES.

Three line type plates \$3.00 each
 Four line type plates and Mimeograph type plates.... 3.50 each

Round glass keys with metal rims can be put on any Ideal machine.

SPECIAL CHANGES CAN BE MADE ON TYPE PLATES AT \$1.00 PER CHARACTER.

Bohemian

155A—Small Roman, Bohemian, Ideal.

žzxčkjgmpcflđ, átaherisounšyvř
 ŽZXČKJGBMPCFLD; .TAHERISOUNŠYVŘ
 q%Q?íé1-2ö3ü4ä5 6ě7"8'9ů&úňwýW/

54—Medium Roman, Bohemian, Ideal.

žzxčkjgmpcflđ, étaherisounšyvř
 ŽZXČKJGBMPCFLD; .TAHERISOUNŠYVŘ
 =%/?!:1-2á3ě4í5 6,,7"8'9(°)ú*ýů&

86—Medium Roman, Bohemian, Ideal.

žzěčíjdbmpevlk, átaherisounšyěř
 ŽZXČGJDBMPCVLK; .TAHERISOUNŠYFŘ
 !%x?g:1-2/3đ4ú5 6,,7"8t9(ú)ň*ýf&

120—Medium Roman, Bohemian, Ideal.

žzěčkjibmpeáld, étaherisounšyvř
 ŽZXČKJGBMPCFLD; .TAHERISOUNŠYVŘ
 !q%Q?:g-2š3f4đ5 6t7"8ú9%0ú/wýW&

154A—Medium Roman, Bohemian, Ideal.

žzxčkjgmpcflđ, átaherisounšyvř
 ŽZXČKJGBMPCFLD; .TAHERISOUNŠYVŘ
 q%Q?íé1-2ö3ü4ä5 6ě7"8'9ů&úňwýW/

156A—Large Roman, Bohemian, Ideal.

žzxčkjgmpcflđ, átaherisounšyvř
 ŽZXČKJGBMPCFLD; .TAHERISOUNŠYVŘ
 q%Q?íé1-2ö3ü4ä5 6ě7"8'9ů&úňwýW/

153C—Gothic, Bohemian, Ideal.

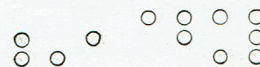
žzxčkjgmpcflđ, átaherisounšyvř
 ŽZXČKJGBMPCFLD; .TAHERISOUNŠYVŘ
 q%Q?íé1-2ö3ü4ä5 6ě7"8'9ů&úňwýW/

157A—Italic, Bohemian, Ideal.

žzxčkjgmpcflđ, átaherisounšyvř
 ŽZXČKJGBMPCFLD; .TAHERISOUNŠYVŘ
 q%Q?íé1-2ö3ü4ä5 6ě7"8'9ů&úňwýW/

Braille

127—Braille, Ideal, (for the Blind).



Bulgarian

49A—Medium, Bulgarian, Ideal.

ЉЗЖКЯГБМПЧЛД, .БАТЕРИСОУНВЪХЙ
 !ЉЗЖКЯГБМПЧЛД; -БАТЕРИСОУНВЪХЙ
 (%), "15263748:9 ЖЖФШNiXxЮЩц/

35A—Italic, Bulgarian, Ideal.

Љзжкягбмпчлд, .батерисоунвѣхй
 !ЉЗЖКЯГБМПЧЛД; -БАТЕРИСОУНВЪХЙ
 [%], "15263748:9 ЖЖФШNiXxЮЩц/

Chilian

65A—Small Roman, Chilian, Ideal.

?zxqkjgmpcflđ, átaherisounwv:
 !ZXQKJGBMPCFLD; -TAHERISOUNWYV&
 ü%/_öä162.3£4\$5 6"7"8'9(0)ñíéúğ

16A—Medium Roman, Chilian, Ideal.

?zxqkjgmpcflđ, átaherisounwv:
 !ZXQKJGBMPCFLD; -TAHERISOUNWYV&
 ü%/_öä162.3£4\$5 6"7"8'9(0)ñíéúğ

46A—Large Roman, Chilian, Ideal.

?zxqkjgmpcflđ, átaherisounwv:
 !ZXQKJGBMPCFLD; -TAHERISOUNWYV&
 ü%/_öä162.3£4\$5 6"7"8'9(0)ñíéúğ

17A—Italic, Chilian, Ideal.

?zxqkjgmpcflđ, átaherisounwv:
 !ZXQKJGBMPCFLD; -TAHERISOUNWYV&
 ü%/_öä162.3£4\$5 6"7"8'9(0)ñíéúğ

6—Italic, Fractions, English, Ideal.

?zxqkjgmbpcfld, .taherisounwyv:
!ZXQKJGBMPCFLD; -TAHERISOUNWYV&
¾%½%¼%1½2¢3£4\$5 6“7”8’9(0)¼*½†%

60—Gothic Italic, English, Ideal.

?zxqkjgmbpcfld, .taherisounwyv:
!ZXQKJGBMPCFLD; -TAHERISOUNWYV&
=%@÷#×1+2¢3£4\$5 6“7”8’9(0)°’_”/

118—Law Italic, English, Ideal.

?zxqkjgmbpcfld, .taherisounwyv:
!ZXQKJGBMPCFLD; -TAHERISOUNWYV&
=¢@÷#×1+2¢3£4\$5 6“7”8’9(0)°’_”/

144A—Multigraph, (Pica), English, Ideal.

*This shuttle is made to match the work of the Gam-
meter Multigraph and to obtain the best results it requires
a machine spacing ten characters to the inch; however, it
can be used on any Hammond.*

?zxqkjgmbpcfld, .taherisounwyv:
!ZXQKJGBMPCFLD; -TAHERISOUNWYV&
=%@÷#×1+2¢3£4\$5 6“7”8’9(0)°’_”/

70—Vertical Script, English, Ideal.

?zxqkjgmbpcfld, .taherisounwyv:
!ZXQKJGBMPCFLD; -TAHERISOUNWYV&
=%@÷#×1+2¢3£4\$5 6“7”8’9(0)°’_”/

Esperanto

105—Small Roman, Esperanto, Ideal.

ĥzjŝkkgmbpcfld, .taherisounĉĝvŭ
ĤZJŜKKGMBPCFLD; -TAHERISOUNĈĜVŬ
x^q?!:1’2@3w4W5 6“7”8’9(0)yY`QX

French

61—Small Roman, French Ideal.

?zxqkjgmbpcfld, étaherisounwyv:
!ZXQKJGBMPCFLD; -TAHERISOUNWYV&
“%/èçù1à2.3£4\$5 6“7”8’9(0)ûôîêâ

14—Medium Roman, French, Ideal.

?zxqkjgmbpcfld, étaherisounwyv:
!ZXQKJGBMPCFLD; -TAHERISOUNWYV&
“%/èçù1à2.3£4\$5 6“7”8’9(0)ûôîêâ

62—Large Roman, French, Ideal.

?zxqkjgmbpcfld, étaherisounwyv:
!ZXQKJGBMPCFLD; -TAHERISOUNWYV&
“%/èçù1à2.3£4\$5 6“7”8’9(0)ûôîêâ

39—Large Roman, French, Special, Ideal.

?zxqkjgmbpcfld, .taherisounwyv:
!ZXQKJGBMPCFLD; -TAHERISOUNWYV&
¾%½%¼%1½2à3è4é5 6ü7”8’9(0)¼âêûç

15—Italic, French, Ideal.

?zxqkjgmbpcfld, étaherisounwyv:
!ZXQKJGBMPCFLD; -TAHERISOUNWYV&
“%/èçù1à2.3£4\$5 6“7”8’9(0)ûôîêâ

79—Gothic Italic, French-German, Ideal.

Özxqkjgmbpcfld, ütaherisounwyvä
!ZXQKJGBMPCFLD; .TAHERISOUNWYV&
çùô?è:1-2\$3à4è5 6ë7”8’9(à)î*_û/

German

36—Small Roman, German, Ideal.

özxqkjgmbpcfld, ütaherisounwyvä
!ZXQKJGBMPCFLD; .TAHERISOUNWYV&
¾%&?½:1-2\$3£4\$5 6,,7”8’9(0)¼*_r/

36B—Small Roman, German, Ideal.

(New Orthography).

özxqkjgmbpcfld, ütaherisounwyvä
ÖZXQKJGBMPCFLD. ÜTAHERISOUNWYVÄ
¾%&?½:1-2\$3;4!5 6,,7”8’9(0)¼*_B/

11—Medium Roman, German, Ideal.

özxqkjgmbpcfld, ütaherisounwyvä
!ZXQKJGBMPCFLD; .TAHERISOUNWYV&
¾%&?½:1-2\$3£4\$5 6,,7”8’9(0)¼*_r/

114—Medium Roman, German, Ideal.

(New Orthography).

özxqkjgmbpcfld, ütaherisounwyvä
ÖZXQKJGBMPCFLD. ÜTAHERISOUNWYVÄ
¾%&?½:1-2\$3;4!5 6,,7”8’9(0)¼*_B/

12—Old Style, Large Roman, German, Ideal.

özxqkjgmbpcfld, ütaherisounwyvä
!ZXQKJGBMPCFLD; .TAHERISOUNWYV&
¾%&?½:1-2\$3£4\$5 6,,7”8’9(0)¼*_r/

12B—Large Roman, German, Ideal.
(New Orthography).

özxqkjgmbpcfld, ütaherisounwyvä
ÖZXQKJGBMPCFLD. ÜTAHERISOUNWYVÄ
¼%&?½: 1-2§3; 4!5 6,,7"8'9(0)¼*_β/

153—Gothic, German, Ideal.

özxqkjgmbpcfld, ütaherisounwyvä
!ZXQKJGBMPCFLD; .TAHERISOUNWYV&
¼%@?½: 1-2§3£4\$5 6,,7"8'9(0)¼*_f/

153A—Gothic, German, Ideal.
(New Orthography).

özxqkjgmbpcfld, ütaherisounwyvä
ÖZXQKJGBMPCFLD. ÜTAHERISOUNWYVÄ
¼%&?½: 1-2§3; 4!5 6,,7"8'9(0)¼*_β/
76—Gothic, Italic, German, Ideal.

özxqkjgmbpcfld, ütaherisounwyvä
!ZXQKJGBMPCFLD; .TAHERISOUNWYV&
¼%@?½: 1-2§3£4\$5 6,,7"8'9(0)¼*_f/

76B—Gothic Italic, German, Ideal.
(New Orthography).

özxqkjgmbpcfld, ütaherisounwyvä
ÖZXQKJGBMPCFLD. ÜTAHERISOUNWYVÄ
¼%&?½: 1-2§3; 4!5 6,,7"8'9(0)¼*_β/

91—Italic Script, German, Ideal.

özxqkjgmbpcfld, ütaherisounwyvä
!ZXQKJGBMPCFLD; .TAHERISOUNWYV&
¼%@?½: 1-2§3£4\$5 6,,7"8'9(0)¼*_f/

91B—Italic Script, German, Ideal.
(New Orthography).

özxqkjgmbpcfld, ütaherisounwyvä
ÖZXQKJGBMPCFLD. ÜTAHERISOUNWYVÄ
¼%&?½: 1-2§3; 4!5 6,,7"8'9(0)¼*_β/

13—Italic, German, Ideal.

özxqkjgmbpcfld, ütaherisounwyvä
!ZXQKJGBMPCFLD; .TAHERISOUNWYV&
¼%@?½: 1-2§3£4\$5 6,,7"8'9(0)¼*_f/

13B—Italic, German, Ideal.
(New Orthography).

özxqkjgmbpcfld, ütaherisounwyvä
ÖZXQKJGBMPCFLD. ÜTAHERISOUNWYVÄ
¼%&?½: 1-2§3; 4!5 6,,7"8'9(0)¼*_β/

102—Italic, German, Ideal.
(New Orthography).

özxqkjgmbpcfld, ütaherisounwyvä
ÖZXQKJGBMPCFLD. ÜTAHERISOUNWYVÄ
¼%&?½: 1-2§3; 4!5 6,,7"8'9(0)¼*_β/

102A—Italic, German, Ideal.

özxqkjgmbpcfld, ütaherisounwyvä
!ZXQKJGBMPCFLD; .TAHERISOUNWYV&
¼%@?½: 1-2§3£4\$5 6,,7"8'9(0)¼*_f/

123—Large Italic, German, Ideal.
(New Orthography).

This shuttle requires special hammer face and can only be used on the wide space machine.

özxqkjgmbpcfld, ütaherisounwyvä
ÖZXQKJGBMPCFLD. ÜTAHERISOUNWYVÄ
¼%&?½: 1-2§3; 4!5 6,,7"8'9(0)¼*_β/

144B—Multigraph (Pica), German, Ideal.

This shuttle is made to match the work of the Gammeter Multigraph.

özxqkjgmbpcfld, ütaherisounwyvä
ÖZXQKJGBMPCFLD. ÜTAHERISOUNWYVÄ
¼%&?½: 1-2§3; 4!5 6,,7"8'9(0)¼*_β/

78—Vertical Script, German, Ideal.

özxqkjgmbpcfld, ütaherisounwyvä
!ZXQKJGBMPCFLD; .TAHERISOUNWYV&
¼%@?½: 1-2§3£4\$5 6,,7"8'9(0)¼*_f/

78B—Vertical Script, German, Ideal.
(New Orthography).

özxqkjgmbpcfld, ütaherisounwyvä
ÖZXQKJGBMPCFLD. ÜTAHERISOUNWYVÄ
¼%@?½: 1-2§3; 4!5 6,,7"8'9(0)¼*_f/

20—German Text, Ideal.

özxqkjgmbpcfld, ütaherisounwyvä
!ZXQKJGBMPCFLD; .TAHERISOUNWYV&
¼%@?½: 1-2§3£4\$5 6,,7"8'9(0)¼*_f/

Greek

8—Small English-Greek, four line, Ideal. \$3.00

?zxqkjgmbpcfld, .tahirisounwyv:
θZXQKJGBMPCFLD; -TAHERISOUNWYVA
f(ēūāōīī₂)3ē4ā5 6"7"8'9[ū]a*æu
=ξψκχγβμπ+φλδö θταηερισουυ<έως

82—English-Greek, four line, Ideal. \$3.00

?zxqkjgbmpcflđ, .taherisounwıv:
;ZXQKJGBMPCFLD "TAHERISOUNWYV:
'ζξψγβμπφλδ' 'τθηρερισαωη"ω"
*(E)Ψ[Γ]<Π>ΦΛΔΖ 3⁻0⁻4⁻5ΣδΩ7-8!9

7—Greek, Ideal.

'ΖΞΨκθγβμπχφλδ, .ταηερισουνως'
FZΞΨΚΘΓΒΜΠΧΦΛΔ; -ΤΑΗΕΡΙΣΟΥΝΩαηψ
/''', [1]2[^]3[^]4[^]5 6[^]7[^]8[^]9[^]([^])"φ[^]θ[^],

75—Greek, Ideal.

'ΖΞΨκθγβμπχφλδ' 'ταηερισουνω[~]ς'
&ΖΞΨΚΘΓΒΜΠΧΦΛΔ' "ΤΑΗΕΡΙΣΟΥΝΩαηψ
%/×":1=2[^]3[^]4[^]5 6[^]7[^]8[^]9[^](0)@. .,-

Hungarian

152—Small Roman, Hungarian, Ideal.

özxqkjgbmpcflđ, átaherisounwıvé
ÖZXQKJGBMPCFLD; ÁTAHERISOUNWYVÉ
|%!?.: *-2§3Ú4ú5 6ú7ö8Ü9üäó&ó="/

44—Medium Roman, Hungarian, Ideal.

özxqkjgbmpcflđ, ütaherisounwıvä
!ZXQKJGBMPCFLD; .TAHERISOUNWYV&
+%×φδ:1-2§3=4ú5 6,,7"8'9(0)á*éó/

57—Medium Roman, Hungarian, Ideal.

özxqkjgbmpcflđ, átaherisounwıvé
ÖZXQKJGBMPCFLD; ÁTAHERISOUNWYVÉ
|%!?.: *-2§3Ú4ú5 6ú7ö8Ü9üäó&ó="/

151—Large Roman, Hungarian, Ideal.

özxqkjgbmpcflđ, átaherisounwıvé
ÖZXQKJGBMPCFLD; ÁTAHERISOUNWYVÉ
|%!?.: *-2§3Ú4ú5 6ú7ö8Ü9üäó&ó="/

74—Gothic Italic, Hungarian, Ideal.

özxqkjgbmpcflđ, átaherisounwıvé
ÖZXQKJGBMPCFLD; ÁTAHERISOUNWYVÉ
|%!?.: *-2§3Ú4ú5 6ú7ö8Ü9üäó&ó="/

Italian

61A—Small Roman, Italian, Ideal.

?zxqkjgbmpcflđ, étaherisounwıv:
!ZXQKJGBMPCFLD; -TAHERISOUNWYV&
"%/èçù1à2.3ì4ò5 6"7"8'9(0)ùôîêâ

14A—Medium Roman, Italian, Ideal.

?zxqkjgbmpcflđ, étaherisounwıv:
!ZXQKJGBMPCFLD; -TAHERISOUNWYV&
"%/èçù1à2.3ì4ò5 6"7"8'9(0)ùôîêâ

62A—Large Roman, Italian, Ideal.

?zxqkjgbmpcflđ, étaherisounwıv:
!ZXQKJGBMPCFLD; -TAHERISOUNWYV&
"%/èçù1à2.3ì4ò5 6"7"8'9(0)ùôîêâ

15A—Italic, Italian, Ideal.

?zxqkjgbmpcflđ, étaherisounwıv.
!ZXQKJGBMPCFLD; -TAHERISOUNWYV&
"%/èçù1à2.3ì4ò5 6"7"8'9(0)ùôîêâ

Mathematical Multiplex

142—Medium Roman, Mathematical, Ideal. \$3.50

This shuttle can only be used on a special instrument known as the Mathematical Machine. Any Ideal shuttle, however, can be used on the Mathematical Machine.

?zxqkjgbmpcflđ, .taherisounwıv:
fZXQKJGBMPCFLDð .TAHERISOUNWYV/
=P<+>×1+2[3]4Δ5 6∞7"8'9(0)Σ{ }/
ζγξψκλ₁β₂π₃φ₄δ₅ 6τ₇ε₈ρ₉α₀ωσθ_nη-

Polish

155—Small Roman, Polish, Ideal.

łzxżkjgbmpcflđ, ątaherisounwıvę
ŁZXŻKJGBMPCFLD. ĄTAHERISOUNWYVĘ
q%Q?Żż1-2&3ó4ó5 6:7"8'9ś"śńóńó/

77—Medium Roman, Polish, Ideal.

żzłśkjgbmpcflđć ątaherisounwıvęó
ŻZŁŚKJGBMPCFLDĆ ĄTAHERISOUNWYVĘÓ
x%X?!:1-2§3ż4Ż5 6"7.8'9(0)ń,Ń;/

121—Medium Roman, Polish-German, Ideal.

ózeqkjgbmpcflđ, ątaherisounwıvł
!ZXQKJGBMPCFLD; .TAHERISOUNWYVŁ
é%×?':1-2§3ż4ó5 6"7,8'9ś0|ń`/&

154—Medium Roman, Polish, Ideal.

łzxżkjgbmpcflđ, ątaherisounwıvę
ŁZXŻKJGBMPCFLD. ĄTAHERISOUNWYVĘ
q%Q?Żż1-2&3ó4ó5 6:7"8'9ś"śńóńó/

SOME MULTIPLEX TYPE FACES.

An exquisite type for private correspondence and foot notes.	1234567
A neat and attractive style for closely written work.	1234567
The standard size for business correspondence and general use.	1234567
Specially made to match the work of the Gammeter Multigraph.	1234567
A new and highly attractive style of type for general use.	1234567
A style greatly admired by all persons requiring large print.	1234567
A beautiful and desirable type for business and other uses.	1234567
A large, bold type for the use of lecturers, clergymen, etc.	1234567
<i>A special style of italic used in connection with Gothic type.</i>	1234567
A UNIQUE, NEW AND ATTRACTIVE STYLE FOR CARDS, ADDRESSES, ETC.	1234567
ANOTHER SAMPLE FROM OUR ASSORTMENT OF GOTHIC TYPES. 1234567890	1234567
Indispensible to those having a large private correspondence.	1234567
<i>A very neat and useful style for emphasis, quotations, etc.</i>	1234567
<i>For general use - Noted for its clear and distinct characters.</i>	1234567
A neat style for use in law offices and for other legal work.	1234567
The banner display type ~ for programs, headings, etc.	1234567
Όχι ητ ηαν το το ζηλον, ζ Οζα αη οβηανη, ζο οουζ γε α εηηζεηηη.	1234567
Благодаря впередъ за все, что Вамъ угодно будетъ сообщить мы	1234567
Просимъ Васъ быть вполне убѣжденнымъ, что все сказанное Вами	1234567
Dieses ist eine Schriftprobe der „Multiplex“ mit deutschem Text.	1234567
Πολλαὶ γλῶτται θνητοῖς, ἀθανάτοῖς μὲν μία.	1234567
Հնարք սերտնայ, որ գանձ է շահարեր:	1234567
בראשית ברא אלהים את השמים ואת הערץ: והערץ היתה תהו ובהו וחשך ע	1234567
פני תהום ורנה אלהים מרחפת על פני המים: ויאמר אלהים יהי אור ויהי	1234567
اشجو نمونه مولتیپلہ کس۔ ہا مموئد یا زی ما کینہ سبیلہ یا ز یلمشدر۔ افندم	۱۲۳۴۵۶۷
فارسی شعر است و ترعی هنر است و دیگرها، گوی، شعر است، x	۱۲۳۴۵۶۷
fizufiz yemem zē cagz kē aficzifymaz aziz vēm zē ayaz ficzēz yz [[2384E“7t”(t	1234567

FOR ADVERTISEMENTS, HEADINGS, ETC., 1234567

156—Large Roman, Polish, Ideal.

Łzxżkjgmbpcfld, ątaherisounwyvę
ŁZXŻKJGBMPCFLD. ĄTAHERISOUNWYVĘ
q%Q?Żż1-2&3ć4ć5 6:7"8'9ś"śńóńó/

153B—Gothic, Polish, Ideal.

łzxżkjgmbpcfłd, ątaherisounwyvę
ŁZXŻKJGBMPCFLD. ĄTAHERISOUNWYVĘ
q%Q?Żż1-2&3ć4ć5 6:7"8'9ś"śńóńó/

157—Italic, Polish, Ideal.

łzxżkjǫbmbpcfłd, ątaherisounwyvę
ŁZXŻKJGBMPCFLD. ĄTAHERISOUNWYVĘ
q%Q?Żż1-2&3ć4ć5 6:7"8'9ś"śńóńó/

Portuguese

63—Medium Roman, Portuguese, Ideal.

ãzxqkjgmbpcfłdç õtaherisounwyv.
ÃZXQKJGBMPCFLDÇ ÕTAHERISOUNWYV&
á%/!ê;ó,2:3£4\$5 6+7"8'9(óú-)é°?

63A—Medium Roman, Portuguese, Ideal.

ãzxqkjgmbpcfłdç õtaherisounwyv.
ÃZXQKJGBMPCFLDÇ ÕTAHERISOUNWYV&
á%/!ê;ó,2:3£4\$5 6+7"8'9(óú-)éR?

63B—Medium Roman, Portuguese, Ideal.

-zxqkjgmbpcfłdç õtaherisoun,ãv.
YZXQKJGBMPCFLDÇ ÕTAHERISOUNWÃV&
ô%/!y;1w2:3£4\$5 6á7"8'9(Oúó)é_?

106—Vertical Script, Portuguese, Ideal.

ãzxqkjgmbpcfłdç õtaherisounwyv.
ÃZXQKJGBMPCFLDÇ ÕTAHERISOUNWYV&
áó/!ê;1,2:3£4\$5 6+7"8'9(óú-)éó?

Roumanian

92—Medium Roman, Roumanian, Ideal.

îzxqkjgmbpcfłd, ătaherisounwyvî
;ZXQKJGBMPCFLDÛ ĂTAHERISOUNWYVÎ
!%/?_:1-2.3&4&5 6ț7*8'9ș0ș“(”)&

Russian

49—Medium, Russian, Ideal.

?цзжкягбмпѣчлđ, .ѡатерисоунвѣый
!ЦЗЖКЯГБМПѢЧЛД; -ЪАТЕРИСОУНВѢЫЙ
(%)„“15263748:9 ЭэфѢШшNiXxЮюЩщ/

35—Italic, Russian, Ideal.

?цзжкягбмпѣчлđ, .ѡатерисоунвѣый
!ЦЗЖКЯГБМПѢЧЛД; -ЪАТЕРИСОУНВѢЫЙ
[%]„“15263748:9 ЭэфѢШшNiXxЮюЩщ/

Servian

125—Servian, Ideal.

чцзжкягбмпѣчлđ, штахерисоунвѣѣѣ
ЧЦЗЖКЯГБМПѢЧЛД. ШТАХЕРИСОУНВѢѢѢ
ѣ%;?½:1-2§3ц4ц5 6!7"8'9(0)¼*+="/

Spanish

65—Small Roman, Spanish, Ideal.

?zxqkjgmbpcfłd, átaherisounwyv:
!ZXQKJGBMPCFLD; -TAHERISOUNWYV&
"%/_ç;1ó2.3£4\$5 6"7"8'9(0)ñíéúğ

65B—Small Roman, Spanish, Ideal.

?zxqkjgmbpcfłd, átaherisounwyv:
!ZXQKJGBMPCFLD; -TAHERISOUNWYV&
½%/_ç;1ó2.3£4\$5 6"7"8'9(0)ñíéúğ

16—Medium Roman, Spanish, Ideal.

?zxqkjgmbpcfłd, átaherisounwyv:
!ZXQKJGBMPCFLD; -TAHERISOUNWYV&
"%/_ç;1ó2.3£4\$5 6"7"8'9(0)ñíéúğ

16B—Medium Roman, Spanish, Ideal.

?zxqkjgmbpcfłd, átaherisounwyv:
!ZXQKJGBMPCFLD; -TAHERISOUNWYV&
½%/_ç;1ó2.3£4\$5 6"7"8'9(0)ñíéúğ

46—Large Roman, Spanish, Ideal.

?zxqkjgmbpcfłd, átaherisounwyv:
!ZXQKJGBMPCFLD; -TAHERISOUNWYV&
"%/_ç;1ó2.3£4\$5 6"7"8'9(0)ñíéúğ

46B—Large Roman, Spanish, Ideal.

?zxqkjgmbpcfłd, átaherisounwyv:
!ZXQKJGBMPCFLD; -TAHERISOUNWYV&
½%/_ç;1ó2.3£4\$5 6"7"8'9(0)ñíéúğ

5A—Caps and Small Caps, Spanish, Ideal.

?ZXQKJGBMPCFLD, ÁTÀHERISOUNWYV:
!ZXQKJGBMPCFLD; -TÀHERISOUNWYV&
"%/_ç;1ó2.3£4\$5 6"7"8'9(0)ñíéúğ

5B—Caps and Small Caps, Spanish, Ideal.

?ZXQKJGBMPCFLD, ÁTAHERISOUNWYV:
!ZXQKJGBMPCFLD; -TAHERISOUNWYV&
½%/_ç|162.3£4\$5 6"7"8'9(0)ñíéú¿

4A—Gothic, Spanish, Ideal.

?zxqkjgbmpcflD, átaherisounwyv:
!ZXQKJGBMPCFLD; -TAHERISOUNWYV&
" %/_ç|162.3£4\$5 6"7"8'9(0)ñíéú¿

60A—Gothic Italic, Spanish, Ideal.

?zxqkjgbmpcflD, átaherisounwyv:
!ZXQKJGBMPCFLD; -TAHERISOUNWYV&
" %/_ç|162.3£4\$5 6"7"8'9(0)ñíéú¿

60B—Gothic Italic, Spanish, Ideal.

?zxqkjgbmpcflD, átaherisounwyv:
!ZXQKJGBMPCFLD; -TAHERISOUNWYV&
½%/_ç|162.3£4\$5 6"7"8'9(0)ñíéú¿

17—Italic, Spanish, Ideal.

?zxqkjgbmpcflD, átaherisounwyv:
!ZXQKJGBMPCFLD; -TAHERISOUNWYV&
" %/_ç|162.3£4\$5 6"7"8'9(0)ñíéú¿

17B—Italic, Spanish, Ideal.

?zxqkjgbmpcflD, átaherisounwyv:
!ZXQKJGBMPCFLD; -TAHERISOUNWYV&
½%/_ç|162.3£4\$5 6"7"8'9(0)ñíéú¿

144—Multigraph, (Pica), Spanish, Ideal.

This shuttle is made to match the work of the Gammeter Multi-graph.

?zxqkjgbmpcflD, átaherisounwyv:
!ZXQKJGBMPCFLD; -TAHERISOUNWYV&
" %/_ç|162.3£4\$5 6"7"8'9(0)ñíéú¿

83—Vertical Script, Spanish, Ideal.

?zxqkjgbmpcflD, átaherisounwyv:
!ZXQKJGBMPCFLD; -TAHERISOUNWYV&
" %/_ç|162.3£4\$5 6"7"8'9(0)ñíéú¿

83B—Vertical Script, Spanish, Ideal.

?zxqkjgbmpcflD, átaherisounwyv:
!ZXQKJGBMPCFLD; -TAHERISOUNWYV&
½%/_ç|162.3£4\$5 6"7"8'9(0)ñíéú¿

Swedish-Finnish

22—Medium Roman, Swedish-Finnish, Ideal.

?zxqkjgbmpcflD, .taherisounwyv:
!ZXQKJGBMPCFLD; -TAHERISOUNWYV&
\$%/÷ü+1*2à3Ö4ö5 6"7"8'9(0)ääÄÅ

38—Medium Roman, Swedish-Finnish, Ideal.

özxqkjgbmpcflDä , taherisounwyvå
ÖZXQKJGBMPCFLDÄ .TAHERISOUNWYVÅ
!\$%/÷ü+1:2-3;4,,5 6"7"8'9*0(£)?/&

New Shuttles

173—Med. Roman, Dutch, English, French, German, Ideal.

özxqkjgbmpcflD, ütaherisounwyvä
!ZXQKJGBMPCFLD; .TAHERISOUNWYV&
¾%@?½:1-2\$3£4\$5 6,,7"8'9(0)¼* _f/

176D—Print Type, Dutch, Ideal.

ijzxqkjgbmpcflD, .taherisounwyv"
'ZXQKJGBMPCFLD; .TAHERISOUNWYV&
'%!½:1-2×3£4\$5 6=7"8'9(0)ç+^f/

"IDEAL" TYPES FOR USE ON "REVERSIBLE" MULTIPLEX

Hebrew English

95A—Hebrew-English, Ideal.

שׁוֹמֵר אֶת הַתּוֹרָה וְהַמִּצְוֹת
!ZXQKJGBMPCFLD, .TAHERISOUNWYV&
%@÷#×1+2ç3£4\$5 6"7"8'9(0)'_"/

90A—Italic, Danish-Norwegian, Universal.
qazwsxedcrfvtgbyhnujmik, olæpäö
 QAZWSXEDCRFVTGB YHNUJMIK?OLÆPÄÖ
 1"ü2:é3!à4%£5+- 6&½7'§8(.9);0=/
 119B—Gothic Italic, Dutch, Universal.

134C—Large Gothic, Danish-Norwegian, Universal.

qazwsxedcrfvtgbyhnujmik, olæpäö
 QAZWSXEDCRFVTGB YHNUJMIK?OLÆPÄÖ
 1"ü2:é3!à4%£5+- 6&½7'§8(.9);0=/
 117B—Italic, Dutch, Universal.

Dutch

71A—Small Roman, Dutch, Universal.

qazwsxedcrfvtgbyhnujmik, olüpäö
 QAZWSXEDCRFVTGB YHNUJMIK?OL.P:!
 1,,@2"¶3\$#4%£5_- 6&*7'§8(f9);0=/
 71F—Small Roman, Dutch, Fractions,

qazwsxedcrfvtgbyhnujmik, olüpäö
 QAZWSXEDCRFVTGB YHNUJMIK?OL.P:!
 1,,½2"½3\$¾4%£5_- 6&*7'§8(f9);0=/
 34A—Medium Roman, Dutch, Universal.

qazwsxedcrfvtgbyhnujmik, olüpäö
 QAZWSXEDCRFVTGB YHNUJMIK?OL.P:!
 1,,@2"¶3\$#4%£5_- 6&*7'§8(f9);0=/
 34D—Medium Roman, Dutch, Fractions,

qazwsxedcrfvtgbyhnujmik, olüpäö
 QAZWSXEDCRFVTGB YHNUJMIK?OL.P:!
 1,,½2"½3\$¾4%£5_- 6&*7'§8(f9);0=/
 50A—Large Roman, Dutch, Universal.

qazwsxedcrfvtgbyhnujmik, olüpäö
 QAZWSXEDCRFVTGB YHNUJMIK?OL.P:!
 1,,@2"¶3\$#4%£5_- 6&*7'§8(f9);0=/
 50C—Large Roman, Dutch, Fractions,

Universal.

qazwsxedcrfvtgbyhnujmik, olüpäö
 QAZWSXEDCRFVTGB YHNUJMIK?OL.P:!
 1,,½2"½3\$¾4%£5_- 6&*7'§8(f9);0=/
 119E—Gothic Italic, Dutch, Fractions,

Universal.

qazwsxedcrfvtgbyhnujmik, olüpäö
 QAZWSXEDCRFVTGB YHNUJMIK?OL.P:!
 1,,@2"¶3\$#4%£5_- 6&*7'§8(f9);0=/
 117E—Gothic Italic, Dutch, Fractions,

Universal.

qazwsxedcrfvtgbyhnujmik, olüpäö
 QAZWSXEDCRFVTGB YHNUJMIK?OL.P:!
 1,,½2"½3\$¾4%£5_- 6&*7'§8(f9);0=/
 117B—Italic, Dutch, Universal.

Universal.

qazwsxedcrfvtgbyhnujmik, olüpäö
 QAZWSXEDCRFVTGB YHNUJMIK?OL.P:!
 1,,@2"¶3\$#4%£5_- 6&*7'§8(f9);0=/
 117F—Italic, Dutch, Fractions, Universal.

Universal.

qazwsxedcrfvtgbyhnujmik, olüpäö
 QAZWSXEDCRFVTGB YHNUJMIK?OL.P:!
 1,,½2"½3\$¾4%£5_- 6&*7'§8(f9);0=/
 84A—Vertical Script, Dutch, Universal.

Universal.

qazwsxedcrfvtgbyhnujmik, olüpäö
 QAZWSXEDCRFVTGB YHNUJMIK?OL.P:!
 1,,@2"¶3\$#4%£5_- 6&*7'§8(f9);0=/
 172—Medium Roman, New Dutch Type Plate

Universal.

qazwsxedcrfvtgbyhnujmik, ol.pij
 QAZWSXEDCRFVTGB YHNUJMIK?OL.P:!
 1^ç2"½3\$/4%£5×- 6&+7'!8(f9);0=/
 For writing Dutch, German, French and English.

English

English

24—Small Roman, English, Universal.

qazwsxedcrfvtgbyhnujmik, ol.p;-
 QAZWSXEDCRFVTGB YHNUJMIK?OL.P:!
 1"Q2#×3\$+4%£5_ç 6&*7'∧8(°9).0=/
 24A—Small Roman, English, Universal.

Universal.

qazwsxedcrfvtgbyhnujmik, ol.p;-
 QAZWSXEDCRFVTGB YHNUJMIK?OL.P:!
 1"Q2#¶3\$+4%£5_ç 6&*7'§8(°9).0=/
 24B—Small Roman, English, Universal.

Universal.

qazwsxedcrfvtgbyhnujmik, ol.p;-
 QAZWSXEDCRFVTGB YHNUJMIK?OL.P:!
 1"Q2#×3\$+4%£5_ç 6&*7'∧8(°9).0=/
 24C—Small Roman, English, Universal.

Universal.

qazwsxedcrfvtgbyhnujmik, ol.p;-
 QAZWSXEDCRFVTGB YHNUJMIK?OL.P:!
 1"Q2#¶3\$+4%£5_ç 6&*7'§8(°9).0=/
 34

Esperanto

135A—Medium Roman, Esperanto, Universal.

qazwsxedcrfvgtgb yhnujmikŝolĉpĵĝ
QAZWSXEDCRFVTGB YHNUJMIKŜOLĈPĴĜ
1" @2/×3\$+4%!5_ - 6ĥ;7':8(,9).0?ŭ

135D—Medium Roman, Esperanto, Universal.

qazwsxedcrfvgtgb yhnujmikŝolĉpĵĝ
QAZWSXEDCRFVTGB YHNUJMIKŜOLĈPĴĜ
1" `2+`3\$^4×^5! - 6ĥ;7':8(,9).0?ŭ

French

67—Small Roman, French, Universal.

qazwsxedcrfvgtgb yhnujmik, olép; -
QAZWSXEDCRFVTGB YHNUJMIK?OL; P: !
1" `è2" `ù3\$à4%£5_ à 6&δ7' î8(â9) ê0ç/

110—Small Roman, French, Universal.

qazwsxedcrfvgtgb yhnujmik'olép.,
QAZWSXEDCRFVTGB YHNUJMIK?OL; P: !
1" +2×ù3f=4%°5_ à 6&-7è^8(ε9) ê0ç/

110A—Small Roman, French, Universal.

qazwsxedcrfvgtgb yhnujmik'olép.,
QAZWSXEDCRFVTGB YHNUJMIK?OL; P: !
1" +2×ù3f=4%°5_ à 6&-7è^8(ε9) §0ç/

32—Medium Roman, French, Universal.

qazwsxedcrfvgtgb yhnujmik, olép; -
QAZWSXEDCRFVTGB YHNUJMIK?OL; P: !
1" `è2" `ù3\$à4%£5_ à 6&δ7' î8(â9) ê0ç/

32A—Medium Roman, French, Universal.

qazwsxedcrfvgtgb yhnujmik, olép; -
QAZWSXEDCRFVTGB YHNUJMIK?OL; P: !
1" `è2" `ù3\$à4%£5_ à 6&δ7' î8(â9) êŝç/

108—Medium Roman, French, Universal.

qazwsxedcrfvgtgb yhnujmik'olép.,
QAZWSXEDCRFVTGB YHNUJMIK?OL; P: !
1" +2×ù3f=4%°5_ à 6&-7è^8(ε9) ê0ç/

108A—Medium Roman, French, Universal.

qazwsxedcrfvgtgb yhnujmik'olép.,
QAZWSXEDCRFVTGB YHNUJMIK?OL; P: !
1" +2×ù3f=4%°5_ à 6&-7è^8(ε9) §0ç/

32E—Medium Roman, French-German-English
Universal.

qazwsxedcrfvgtgb yhnujmik, olép° -
QAZWSXEDCRFVTGB YHNUJMIK?OL; P: !
1" `è2" `ù3\$à4%£5_ à 6&δ7' î8(â9) ê¼ç/

69—Large Roman, French, Universal.

qazwsxedcrfvgtgb yhnujmik, olép; -
QAZWSXEDCRFVTGB YHNUJMIK?OL; P: !
1" `è2" `ù3\$à4%£5_ à 6&δ7' î8(â9) ê0ç/

109—Large Roman, French, Universal.

qazwsxedcrfvgtgb yhnujmik'olép.,
QAZWSXEDCRFVTGB YHNUJMIK?OL; P: !
1" +2×ù3f=4%°5_ à 6&-7è^8(ε9) ê0ç/

109A—Large Roman, French, Universal.

qazwsxedcrfvgtgb yhnujmik'olép.,
QAZWSXEDCRFVTGB YHNUJMIK?OL; P: !
1" +2×ù3f=4%°5_ à 6&-7è^8(ε9) §0ç/

134E—Large Gothic, French, Universal.

qazwsxedcrfvgtgb yhnujmik'olép.,
QAZWSXEDCRFVTGB YHNUJMIK?OL; P: !
1" +2×ù3f=4%°5_ à 6&-7èδ8(î9) §0ç/

104—Italic, French, Universal.

qazwsxedcrfvgtgb yhnujmik'olép.,
QAZWSXEDCRFVTGB YHNUJMIK?OL; P: !
1" +2×ù3f=4%°5_ à 6&-7è^8(ε9) ê0ç/

104A—Italic, French, Universal.

qazwsxedcrfvgtgb yhnujmik'olép.,
QAZWSXEDCRFVTGB YHNUJMIK?OL; P: !
1" +2×ù3f=4%°5_ à 6&-7è^8(ε9) §0ç/

85—Vertical Script, French, Universal.

qazwsxedcrfvgtgb yhnujmik, olép; -
QAZWSXEDCRFVTGB YHNUJMIK?OL; P: !
1" `è2" `ù3\$à4%£5_ à 6ψδ7' î8(â9) ê0ç/

111—Vertical Script, French, Universal.

qazwsxedcrfvgtgb yhnujmik'olép.,
QAZWSXEDCRFVTGB YHNUJMIK?OL; P: !
1" +2×ù3f=4%°5_ à 6ψ-7è^8(ε9) ê0ç/

119A—Gothic Italic, German, Universal.

qazwsxedcrfvtgb yhnujmik, olüpäö
QAZWSXEDCRFVTGB YHNUJMIK?OL.P:!
1,,@2" #3\$#4%£5_ - 6&*7'§8(§9);0=!

119C—Gothic Italic, German, Fractions,
Universal. (New Orthography).

qazwsxedcrfvtgb yhnujmik, olüpäö
QAZWSXEDCRFVTGB YHNUJMIK.OLÜPÄÖ
1,,¼2":3!½4%?5¾- 6&*7'§8(B9);0=!

119D—Gothic Italic, German, Fractions,
Universal.

qazwsxedcrfvtgb yhnujmik, olüpäö
QAZWSXEDCRFVTGB YHNUJMIK?OL.P:!
1,,¼2"½3\$¾4%£5_ - 6&*7'§8(§9);0=!

117—Italic, German, Universal.
(New Orthography).

qazwsxedcrfvtgb yhnujmik, olüpäö
QAZWSXEDCRFVTGB YHNUJMIK.OLÜPÄÖ
1,,@2":3!#4%?5_ - 6&*7'§8(B9);0=!

117A—Italic, German, Universal.
(New Orthography).

qazwsxedcrfvtgb yhnujmik, olüpäö
QAZWSXEDCRFVTGB YHNUJMIK?OL.P:!
1,,@2" #3\$#4%£5_ - 6&*7'§8(§9);0=!

117D—Italic, German, Fractions, Universal.
(New Orthography).

qazwsxedcrfvtgb yhnujmik, olüpäö
QAZWSXEDCRFVTGB YHNUJMIK.OLÜPÄÖ
1,,¼2":3!½4%?5¾- 6&*7'§8(B9);0=!

117E—Italic, German, Fractions, Universal.

qazwsxedcrfvtgb yhnujmik, olüpäö
QAZWSXEDCRFVTGB YHNUJMIK?OL.P:!
1,,¼2"½3\$¾4%£5_ - 6&*7'§8(§9);0=!

724—Large Italic, German, Universal.
(New Orthography).

This shuttle requires special hammer face and can only be used on the wide space machine.

qazwsxedcrfvtgb yhnujmik, olüpäö
QAZWSXEDCRFVTGB YHNUJMIK.OLÜPÄÖ
1..@2":3!#4%?5_ - 6&*7'§8(B9);0=!

145A—Large Multigraph, (Pica), German,
Universal. (New Orthography).

This shuttle is made to match the work of the Gammeter Multigraph.

qazwsxedcrfvtgb yhnujmik, olüpäö
QAZWSXEDCRFVTGB YHNUJMIK.OLÜPÄÖ
1,,@2":3!#4%?5_ - 6&*7'§8(B9);0=!

145B—Multigraph, (Pica), French Universal.

qazwsxedcrfvtgb yhnujmik, olép;-
QAZWSXEDCRFVTGB YHNUJMIK?OL.P:!
1"è2"ù3\$à4%£5_û 6&ô7'î8(â9)êôç/

84—Vertical Script, German, Universal.

qazwsæedcrfvtgb yhnujmik, olüpäö
2QZWSXEDCRFVTGB YHNUJMIK?OL.P:!
1,,@2" #3\$#4%£5_ - 6φ*7'§8(§9);0=!

84B—Vertical Script, German, Fractions,
Universal.

qazwsæedcrfvtgb yhnujmik, olüpäö
2QZWSXEDCRFVTGB YHNUJMIK?OL.P:!
1,,¼2"½3\$¾4%£5_ - 6φ*7'§8(§9);0=!

Greek

112A—Greek, Universal.

ψαζ"σξεδχρφωτγβ "ηνυθμικ, ολ.π~
ΨΑΖ"ΣΞΕΔΧΡΦΩΤΓΒ "ΗΝΥΘΜΙΚ; ΟΛ·Π~
1α+2ςf3'4'ω5', 6η&7'@8(×9)"0~!

112B—Greek, Universal

ψαζ"σξεδχρφωτγβ "ηνυθμικ, ολ.π~
ΨΑΖ"ΣΞΕΔΧΡΦΩΤΓΒ "ΗΝΥΘΜΙΚ; ΟΛ·Π~
1α+2ςf3'4'ω5' _ 6η&7'@8(½9)"0~!

Hungarian

56—Old Style, Medium Roman, Hungarian,
Universal.

qazwsxedcrfvtgb yhnujmik, ol.péá
QAZWSXEDCRFVTGB YHNUJMIKÜOL|PÉÁ
2ä; 3ó: 4ó-5%! 6úö 7&ö8"§9üü*ú?ó=!

134A—Large Gothic, Hungarian, Universal.

qazwsxedcrfvtgbyhnujmik,ol.péá
QAZWSXEDCRFVTGB YHNUJMIKÜOL|PÉÁ
*ä;2ó:3ó-4%!5úö 6&ö7"§8úú9ú?ö=/

64—Italic, Old Style, Hungarian Universal.

qazwsxedcrfvtgbyhnujmik,ol.péá
QAZWSXEDCRFVTGB YHNUJMIKÜOL|PÉÁ
2ä;3ó:4ó-5%!6úö 7&ö8"§9úú*ú?ö=/

Italian

67A—Small Roman, Italian, Universal.

qazwsxedcrfvtgbyhnujmik,olép;-
QAZWSXEDCRFVTGB YHNUJMIK?OL.P:!
1"è2"ù3òà4%ì5_à 6&ö7'î8(â9)é0ç/

110B—Small Roman, Italian Universal.

qazwsxedcrfvtgbyhnujmik'olép.,
QAZWSXEDCRFVTGB YHNUJMIK?OL;P:!
1"+2×ù3^f=4%°5_à 6&-7èð8(ì9)§0ç/

32B—Medium Roman, Italian, Universal

qazwsxedcrfvtgbyhnujmik,olép;-
QAZWSXEDCRFVTGB YHNUJMIK?OL.P:!
1"è2"ù3òà4%ì5_à 6&ö7'î8(â9)é0ç/

73—Medium Roman, Italian, Universal.

qazwsxedcrfvtgbyhnujmik,ol.p;-
QAZWSXEDCRFVTGB YHNUJMIK?OL.P:!
1"è2ìù3\$+4%£5_à 6&ö7'½8(°9).0=/

108B—Medium Roman, Italian, Universal.

qazwsxedcrfvtgbyhnujmik'olép.,
QAZWSXEDCRFVTGB YHNUJMIK?OL;P:!
1"+2×ù3^f=4%°5_à 6&-7èð8(ì9)§0ç/

69A—Large Roman, Italian, Universal.

qazwsxedcrfvtgbyhnujmik,olép;-
QAZWSXEDCRFVTGB YHNUJMIK?OL.P:!
1"è2"ù3òà4%ì5_à 6&ö7'î8(â9)é0ç/

109B—Large Roman, Italian, Universal.

qazwsxedcrfvtgbyhnujmik'olép.,
QAZWSXEDCRFVTGB YHNUJMIK?OL;P:!
1"+2×ù3^f=4%°5_à 6&-7èð8(ì9)§0ç/

27A—Caps and Small Caps, Italian, Universal.

QAZWSXEDCRFVTGB YHNUJMIK,OLÉP;-
QAZWSXEDCRFVTGB YHNUJMIK?OL.P:!
1"è2"ù3òà4%ì5_à 6&ö7'î8(â9)é0ç/

27B—Caps and Small Caps, Italian, Universal.

QAZWSXEDCRFVTGB YHNUJMIK'OLÉP.,
QAZWSXEDCRFVTGB YHNUJMIK?OL;P:!
1"+2×ù3^f=4%°5_à 6&-7èð8(ì9)§0ç/

134F—Large Gothic, Italian, Universal.

qazwsxedcrfvtgbyhnujmik'olép.,
QAZWSXEDCRFVTGB YHNUJMIK?OL;P:!
1"+2×ù3^f=4%°5_à 6&-7èð8(ì9)§0ç/

104B—Italic, Italian, Universal.

qazwsxedcrfvtgbyhnujmik'olép.,
QAZWSXEDCRFVTGB YHNUJMIK?OL;P:!
1"+2×ù3^f=4%°5_à 6&-7èð8(ì9)§0ç/

150B—Italic, Italian, Universal.

qazwsxedcrfvtgbyhnujmik'olép.,
QAZWSXEDCRFVTGB YHNUJMIK?OL;P:!
1"+2×ù3^f=4%°5_à 6&-7èð8(ì9)§0ç/

85A—Vertical Script, Italian, Universal.

qazwsxedcrfvtgbyhnujmik,olép;-
QAZWSXEDCRFVTGB YHNUJMIK?OL.P:!
1"è2"ù3òà4%ì5_à 6&ö7'î8(â9)é0ç/

111B—Vertical-Script, Italian Universal.

qazwsxedcrfvtgbyhnujmik'olép.,
QAZWSXEDCRFVTGB YHNUJMIK?OL;P:!
1"+2×ù3^f=4%°5_à 6&-7èð8(ì9)§0ç/

Mathematical \$3.50 each

135, 135B and 135C shuttles can only be used on a special instrument known as the Mathematical Machine. Any Universal shuttle, however, can be used on the Mathematical Machine.

135—Medium Roman, Mathematical, Universal.

qazwsxedcrfvtgbyhnujmik,ol.p.v/
QAZWSXEDCRFVTGB YHNUJMIK?OL@P:f
1"_2Σ×3Δ+4∞[5Γ] 6÷*7'|8(<9)>0=/
1αζ2ε3δρ4ψθ5γβ 6ητ7εφ8κω9λπον—

135B—Medium Roman, Mathematical, Universal
 qazwsxedcrfvgtgb yhnujmik, ol.p.v/
 QAZWSXEDCRFVTGB YHNUJMIK?OLAP:f
 1" _2Σ×3Δ+4∞[5Γ] 6÷{7'}8(<9)>0=/
 1αζ₂σξ₃δρ₄ψθ₅γβ ₆ητ₇εφ₈κω₉λπ₀η-

135C—Medium Roman, Mathematical, Universal
 qazwsxedcrfvgtgb yhnujmik, ol.p.v
 QAZWSXEDCRFVTGB YHNUJMIK?OLAP:f
 1" _2Σ×3Δ+4∞[5Γ] 6÷v7'μ8(<9)>0=/
 1αζ₂σξ₃δρ₄ψθ₅γβ ₆ητ₇εφ₈κω₉λπ₀η-

Polish

30—Medium Roman, Polish, Universal.
 qazwszedcrfvgtgb yhnujmikóolłpćś
 QAZWSZEDCRFVTGB YHNUJMIKqOLEPĆŚ
 1x-2X"3ń?4ę:5ś. 6%;7ź,8ż/9!(0')

141—Large Roman, Polish, Universal.
 qazwszedcrfvgtgb yhnujmikóolłpćś
 QAZWSZEDCRFVTGB YHNUJMIKqOLLPĆŚ
 1x-2X"3ń?4ę:5ś. 6%;7ź,8ż/9!(0')

150C—Italic, Polish, Universal.
 qazwszedcrfvgtgb yhnujmikóolłpćś
 QAZWSZEDCRFVTGB YHNUJMIKqOLEPĆŚ
 1x-2X"3ń?4ę:5ś. 6%;7ź,8ż/9!(0')

Portuguese

159—Small Roman, Portuguese, Universal.
 qazwsxedcrfvgtgb yhnujmik, olãpçõ
 QAZWSXEDCRFVTGB YHNUJMIK?OLÃPÇÕ
 1";2:á3\$ _4%£5ê- 6&ó7'ô8(§9)éº./

103—Medium Roman, Portuguese, Universal.
 qazwsxedcrfvgtgb yhnujmik, olãpçõ
 QAZWSXEDCRFVTGB YHNUJMIK?OLÃPÇÕ
 1";2:á3èà4%£5ê- 6&ó7'ô8(ú9)éº./

103A—Medium Roman, Portuguese, Universal.
 qazwsxedcrfvgtgb yhnujmik, olãpçõ
 QAZWSXEDCRFVTGB YHNUJMIK?OLÃPÇÕ
 1";2:á3\$+4%£5ê- 6&ó7'ô8(ú9)éº./

103B—Medium Roman, Portuguese, Universal.
 qazwsxedcrfvgtgb yhnujmik, olãpçõ
 QAZWSXEDCRFVTGB YHNUJMIK?OLÃPÇÕ
 1";2:á3\$ _4%£5ê- 6&ó7'ô8(§9)éº./

150—Italic, Portuguese, Universal.

qazwsxedcrfvgtgb yhnujmik, olãpçõ
 QAZWSXEDCRFVTGB YHNUJMIK?OLÃPÇÕ
 1";2:á3\$ _4%£5ê- 6&ó7'ô8(§9)éº./

Roumanian

32C—Medium Roman, Roumanian, Universal.
 qazwsxedcrfvgtgb yhnujmik, olëp;-
 QAZWSXEDCRFVTGB YHNUJMIK?OL.P:!
 1" ,2ş"3şă4%î5_ű 6&*7'î8(â9)ê0ţ/

32D—Medium Roman, Roumanian, Universal.
 qazwsxedcrfvgtgb yhnujmik, olăpşţ
 QAZWSXEDCRFVTGB YHNUJMIK?OL;P:!
 1" ,2."3ş=4%î5_ű 6&*7'î8(â9)+0- /

97A—Gothic Italic, Roumanian, Universal.
 qazwsxedcrfvgtgb yhnujmik, olëp;-
 QAZWSXEDCRFVTGB YHNUJMIK?OL.P:!
 1" ,2ş"3şă4%î5_ű 6&*7'î8(â9)ê0ţ/

Russian

31—Medium, Russian, Universal.
 цацвсзедчрфжтгб юиуямикьольпѣй
 ЦАЦВСЗЕДЧРФЖТГБ ЮИУЯМИКЬОЛЬПѢЙ
 1x-2X"3э?4э:5н. 6%;7ш,8ш/9щv0щV
 31A—Medium, Russian, Universal.

цацвсзедчрфжтгб юиуямикьольпѣй
 ЦАЦВСЗЕДЧРФЖТГБ ЮИУЯМИКЬОЛЬПѢЙ
 1x-2X"3э?4э:5н. 6%;7ш,8ш/9щ(0щ)

31B—Medium, Russian, Universal.
 цацвсзедчрфжтгб юиуямикьольпѣй
 ЦАЦВСЗЕДЧРФЖТГБ ЮИУЯМИКЬОЛЬПѢЙ
 1x-2X"3э?4э:5н. 6%;7ш,8ш/9щv\$щV

29—Large, Russian, Universal.
 цацвсзедчрфжтгб юиуямикьольпѣй
 ЦАЦВСЗЕДЧРФЖТГБ ЮИУЯМИКЬОЛЬПѢЙ
 1x-2X"3э?4э:5н. 6%;7ш,8ш/9щv0щV

29A—Large Russian, Universal.
 цацвсзедчрфжтгб юиуямикьольпѣй
 ЦАЦВСЗЕДЧРФЖТГБ ЮИУЯМИКЬОЛЬПѢЙ
 1x-2X"3э?4э:5н. 6%;7ш,8ш/9щ(0щ)

29B—Large, Russian, Universal.

НАЦВСЗЕДЧРФЖТГБ ЮИНУЯМИКБОЛЪПЪЙ
НАЦВСЗЕДЧРФЖТГБ ЮИНУЯМИКБОЛЪПЪЙ
1x-2X"3э?4Э:5Н. 6%;7ш,8Ш/9щv§ЩV

143—Large, Russian, Universal.

ЙФЯІЫЧУВЪКЪСЕАМ НПИГРТШОЬЩЛБЗДЮ
ЙФЯІЫЧУВЪКЪСЕАМ НПИГРТШОЬЩЛБЗДЮ
1V-2%"3э!4Э:5Ц. 6Ц№7х,8Х/9ж(ОЖ)

42—Italic, Russian, Universal.

нацвсзедчрфжтгб юинуюмикбольпный
НАЦВСЗЕДЧРФЖТГБ ЮИНУЯМИКБОЛЪПЪЙ
1x-2X"3э?4Э:5Н. 6%;7ш,8Ш/9щvОЩV

42A—Italic, Russian, Universal.

нацвсзедчрфжтгб юинуюмикбольпный
НАЦВСЗЕДЧРФЖТГБ ЮИНУЯМИКБОЛЪПЪЙ
1x-2X"3э?4Э:5Н. 6%;7ш,8Ш/9щ(ОЩ)

115—Large Italic, Russian, Universal.

нацвсзедчрфжтгб юинуюмикбольпный
НАЦВСЗЕДЧРФЖТГБ ЮИНУЯМИКБОЛЪПЪЙ
1x-2X"3э?4Э:5Н. 6%;7ш,8Ш/9щvОЩV

115A—Large Italic, Russian, Universal.

нацвсзедчрфжтгб юинуюмикбольпный
НАЦВСЗЕДЧРФЖТГБ ЮИНУЯМИКБОЛЪПЪЙ
1x-2X"3э?4Э:5Н. 6%;7ш,8Ш/9щ(ОЩ)

115B—Large Italic, Russian, Universal.

нацвсзедчрфжтгб юинуюмикбольпный
НАЦВСЗЕДЧРФЖТГБ ЮИНУЯМИКБОЛЪПЪЙ
1x-2X"3э?4Э:5Н. 6%;7ш,8Ш/9щv§ЩV

Servian

126—Servian, Universal.

жацвсзедѣрѣфѣтгб ѣхнујмик, олшпъч
ЖАЦВСЗЕДѢРѢФѢТГБ ЪХНУЈМИК. ОЛШПЪЧ
1!;2"¼3?½4%¾5Ц- 6Ц*7'§8(:9)+0=/
1"02"i3\$;4%£5_ñ 6&67'18(ú9)é0ç/

Spanish

66—Small Roman, Spanish, Universal.

qazwsxedcrfvgtgb yhnujmik, oláp;-
QAZWSXEDCRFVTGB YHNUJMIK?OL.P:!
1"02"i3\$;4%£5_ñ 6&67'18(ú9)é0ç/

66B—Small Roman, Spanish, Universal.

qazwsxedcrfvgtgb yhnujmik, oláp;-
QAZWSXEDCRFVTGB YHNUJMIK?OL.P:!
1"02½i3\$;4%£5_ñ 6&67'18(ú9)é0ç/

33—Medium Roman, Spanish, Universal.

qazwsxedcrfvgtgb yhnujmik, oláp;-
QAZWSXEDCRFVTGB YHNUJMIK?OL.P:!
1"02"i3\$;4%£5_ñ 6&67'18(ú9)é0ç/

33B—Medium Roman, Spanish, Universal.

(Mexican-Spanish Keyboard).

qazwsxedcrfvgtgb yhnujmik, ol.p;ñ
QAZWSXEDCRFVTGB YHNUJMIK?OL-P:ñ
1"02#x3\$+4%£5_ç 6&67'18(ú9)é0á/

33C—Medium Roman, Spanish, Universal.

qazwsxedcrfvgtgb yhnujmik, oláp;-
QAZWSXEDCRFVTGB YHNUJMIK?OL.P:!
1"02½i3\$;4%£5_ñ 6&67'18(ú9)é0ç/

47—Large Roman, Spanish, Universal.

qazwsxedcrfvgtgb yhnujmik, oláp;-
QAZWSXEDCRFVTGB YHNUJMIK?OL.P:!
1"02"i3\$;4%£5_ñ 6&67'18(ú9)é0ç/

68A—Italic, Spanish, Universal.

qazwsxedcrfvgtgb yhnujmik, oláp;-
QAZWSXEDCRFVTGB YHNUJMIK?OL.P:!
1"02"i3\$;4%£5_ñ 6&67'18(ú9)é0ç/

28A—Law Italic, Spanish, Universal.

qazwsxedcrfvgtgb yhnujmik, oláp;-
QAZWSXEDCRFVTGB YHNUJMIK?OL.P:!
1"02"i3\$;4%£5_ñ 6&67'18(ú9)é0ç/

89—Vertical Script, Spanish, Universal.

qazwsæedcrfvgtgb yhnujmik, oláp;-
2QZWSÆEDCRFVGTGB YHNUJMIK?OL.P:!
1"02"i3\$;4%£5_ñ 6&67'18(ú9)é0ç/

Swedish-Finnish

93—Small Roman, Swedish-Finnish, Universal.

qazwsxedcrfvgtgb yhnujmik, olápäö
QAZWSXEDCRFVTGB YHNUJMIK?OLÄPÄÖ
1"ü2:é3!à4%£5+- 6&½7'§8(.9);0=/
1"ü2:é3!à4%£5+- 6&½7'§8(.9);0=/
51

93A—Small Roman, Swedish-Finnish, Universal.

qazwsxedcrfvtgbyhnujmik,olåpäö
QAZWSXEDCRFVTGB YHNUJMIK?OLÅPÄÖ
1"ü2:é3!à4%£5+- 6&½7*#8(.9);0=/
55—Medium Roman, Swedish-Finnish,
Universal.

qazwsxedcrfvtgbyhnujmik,olåpäö
QAZWSXEDCRFVTGB YHNUJMIK?OLÅPÄÖ
1"ü2:¶3\$#4%£5_- 6&*7'§8(.9);0=/
55A—Medium Roman, Swedish-Finnish,
Universal.

qazwsxedcrfvtgbyhnujmik,olåpäö
QAZWSXEDCRFVTGB YHNUJMIK?OLÅPÄÖ
1"ü2:é3!à4%£5+- 6&½7'§8(.9);0=/
55B—Medium Roman, Swedish-Finnish,
Universal.

qazwsxedcrfvtgbyhnujmik,olåpäö
QAZWSXEDCRFVTGB YHNUJMIK?OLÅPÄÖ
1"ü2:é3!à4%£5+- 6&½7*#8(.9);0=/
55C—Medium Roman, Fractions, Swedish-
Finnish, Universal.

qazwsxedcrfvtgbyhnujmik,olåpäö
QAZWSXEDCRFVTGB YHNUJMIK?OLÅPÄÖ
1"ü2:é3¼¼4%£5¼ 6&½7'¼8(.9)¼¼¼/
101—Large Roman, Swedish-Finnish, Universal.

qazwsxedcrfvtgbyhnujmik,olåpäö
QAZWSXEDCRFVTGB YHNUJMIK?OLÅPÄÖ
1"ü2:é3!à4%£5+- 6&½7*#8(.9);0=/
101A—Large Roman, Swedish-Finnish,
Universal.

qazwsxedcrfvtgbyhnujmik,olåpäö
QAZWSXEDCRFVTGB YHNUJMIK?OLÅPÄÖ
1"ü2:¶3\$#4%£5_- 6&*7'§8(.9);0=/
101B—Large Roman, Swedish-Finnish,
Universal.

qazwsxedcrfvtgbyhnujmik,olåpäö
QAZWSXEDCRFVTGB YHNUJMIK?OLÅPÄÖ
1"ü2:é3!à4%£5+- 6&½7'§8(.9);0=/
134B—Large Gothic, Swedish-Finnish, Universal

qazwsxedcrfvtgbyhnujmik,olåpäö
QAZWSXEDCRFVTGB YHNUJMIK?OLÅPÄÖ
1"ü2:é3!à4%£5+- 6&½7'§8(.9);0=/
90—Italic, Swedish-Finnish, Universal.

90—Italic, Swedish-Finnish, Universal.

qazwsxedcrfvtgbyhnujmik,olåpäö
QAZWSXEDCRFVTGB YHNUJMIK?OLÅPÄÖ
1"ü2:é3!à4%£5+- 6&½7'§8(.9);0=/
POLYGLOT SHUTTLES

33D—Spanish, French, English, Universal.

qazwsxedcrfvtgbyhnujmik,oláp;-
QAZWSXEDCRFVTGB YHNUJMIK?OL.P:!
à"â2êî3\$;4%£5_ñ 6&ó7'í8óú9úéèç/
172—Dutch, German, French, English, Universal.

172—Dutch, German, French, English, Universal.

qazwsxedcrfvtgbyhnujmik,ol.pij"
QAZWSXEDCRFVTGB YHNUJMIK?OL.P: `
1^ç2"½3\$;4%£5×- 6&+7'!8(f9);0= `

A similar type plate is also being made for the Ideal keyboard.

34E—Medium Roman, Lithuanian, Croatian, Ger-
man, English, Universal.

qazwsxedcrfvtgbyhnujmik,olüpäö
QAZWSXEDCRFVTGB YHNUJMIK?OL.P:!
1.,ž2"Ž3Ć64%Č5č- 6&ū7'Ū8(š9);0Š/
32—French, English, Universal.

32—French, English, Universal.

qazwsxedcrfvtgbyhnujmik,olép;-
QAZWSXEDCRFVTGB YHNUJMIK?OL.P:!
1"è2"ù3\$à4%£5_û 6&ô7'î8(â9)ê0ç/
103B—Portuguese, English, Universal.

103B—Portuguese, English, Universal.

qazwsxedcrfvtgbyhnujmik,olâpçç
QAZWSXEDCRFVTGB YHNUJMIK?OLÂPÇÇ
!";2:á3èà4%£5ê- 6&ó7'ò8(ú9)é°./
113—English, Spanish, French, Italian, German,
Dutch, Universal.

113—English, Spanish, French, Italian, German,
Dutch, Universal.

qazwsxedcrfvtgbyhnujmik,ol.p;-
QAZWSXEDCRFVTGB YHNUJMIK?OL.P:!
1" ` 2" ` æ3' +4^æ5~ç 6&*7'§8(°9)[0=]

New Shuttles

170—Roman Print Type, English, Universal.

qazwsxedcrfvtgb yhnujmik, ol. p; -
 QAZWSXEDCRFVTGB YHNUJMIK?OL. P: !
 1" @ 2# × 3\$ + 4% £ 5_ ¢ 6 & * 7' ^ 8 (° 9) . 0 = /

170A—Print Type, Spanish, Universal.

qazwsxedcrfvtgb yhnujmik, oláp; -
 QAZWSXEDCRFVTGB | YHNUJMIK?OL. P: !
 1" @ 2 ¨ ; 3 \$; 4 % £ 5 _ ñ 6 & ó 7' í 8 (ú 9) é 0 ¢ /

170B—Roman Print Type, Spanish, Universal.

qazwsxedcrfvtgb yhnujmik, oláp; -
 QAZWSXEDCRFVTGB YHNUJMIK?OL. P: !
 1" @ 2 ½ ; 3 \$; 4 % £ 5 _ ñ 6 & ó 7' í 8 (ú 9) é 0 ¢ /

170C—Roman Print Type, German, Universal.

qazwsxedcrfvtgb yhnujmik, olüpää
 QAZWSXEDCRFVTGB YHNUJMIK?OL. P: !
 1. „ @ 2 “ ¶ 3 \$ § 4 % £ 5 _ - 6 & * 7' § 8 (f 9) ; 0 = /

170D—Print Type, Med. Roman, German,
 Universal.

qazwsxedcrfvtgb yhnujmik, olüpää
 QAZWSXEDCRFVTGB YHNUJMIK?OL. P: !
 1. „ 1 2 “ 1 3 \$ 4 % £ 5 _ - 6 & * 7' § 8 (f 9) ; 0 = /

170E—Roman Print Type, German, Universal.

qazwsxedcrfvtgb yhnujmik, olüpää
 QAZWSXEDCRFVTGB YHNUJMIK?OL. P: !
 1. „ @ 2 “ ¶ 3 \$ Ä 4 % £ 5 _ - 6 & ö 7' ü 8 (ß 9) ; 0 = /

Display Types

*Shuttles 100 and 133 can be used only as a special instrument, known as the
 Display Type Machine.*

100—Display Type, Ideal.

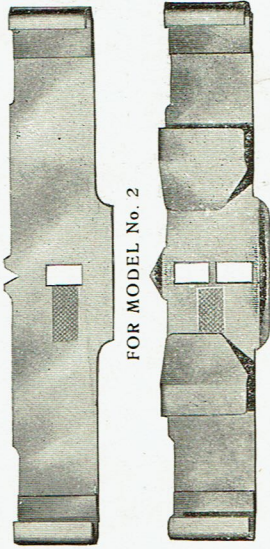
ZQJBPFD THRSUWV 24680
 --XKGMCL; . AEI ONY& 13579.

133—Display Type, Universal.

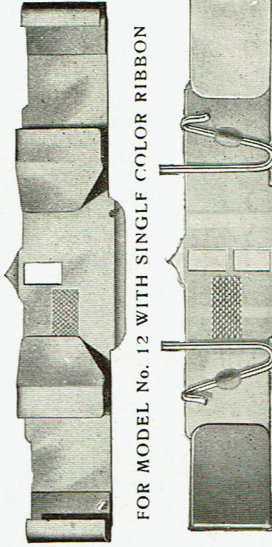
QZSECF TB HUMKO. & 24680
 AWWDRVG YNJI, LP- 13579.

TYPE PLATE SHIELDS

In ordering shields, compare the shield you are now using with the cut and order by number. Price, 15c. each.



FOR MODEL No. 2



FOR MODEL No. 12 WITH SINGLE COLOR RIBBON

FOR MODEL No. 12 WITH TWO COLOR RIBBON

Note:—The No. 12 single-color and the No. 12 two-color Shields can be used on the same machine. Where only one-color ribbon is used it is best to order No. 12 single-color shields.

This shield can be used for both one and two colors but please specify particularly if Multiplex shield is for one or two color ribbon.

THE LATEST STYLE OF TYPE PLATE SHIELD USED ON THE MULTIPLEX HAMMOND

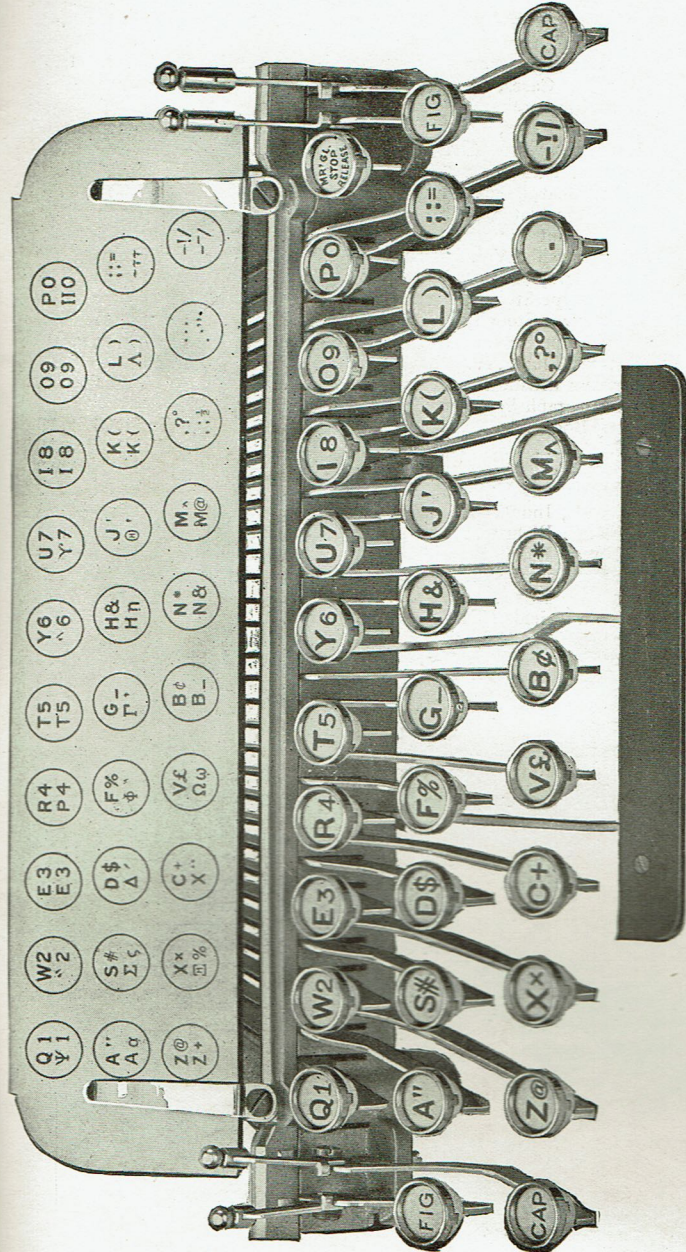
Note:—Users of No. 12 Hammond Typewriters can have their machines equipped with the improved Multiplex Shield upon application to any of our branches or dealers.



RUBBER IMPRESSION STRIPS. SPECIAL THIN IMPRESSION STRIPS CAN BE FURNISHED IF DESIRED.

COMBINATION LANGUAGE PLATE

For following types:
English, 23
Greek, 112B



Regular English Keyboard No. 23

HAMMOND TYPEWRITER SUPPLIES

Brush, Types	Each	\$.20	
Brushes, Dust	Each	.10	
Buttons, Key	Each	.10	
"Multiplex" Brand Carbon Paper			
8 x 10 and 8 x 12, any color	} Per 100 Sheets	2.00	
8½ x 10½, any color		Per Dozen	.35
8½ x 11½, 8½ x 12, any color			
"Duplex" Brand Carbon Paper			
Special, any of the above sizes	Per 100 Sheets	1.25	
"Multiplex" Brand Carbon Paper			
8 x 13 and 8½ x 13, any color	Per 100 Sheets	2.25	
8 x 13 and 8½ x 13, any color	Per Dozen	.45	
"Duplex" Carbon Paper			
Special, either of the above sizes	Per 100 Sheets	1.50	
Carrying Cases, Canvas	Each	4.00	
Imitation Leather Cases, Leather Trimmed	Each	10.00	
Carrying Cases, Leather	Each	15.00	
Champion Screw Drivers	Each	.25	
Erasers, Rubber	Each	.05 & .10	
Pencil Sharpeners	Each	1.00 & 1.50	
Language Plates	Each	.35	
Manuscript Covers	Per Hundred	.50 to .90	
Mimeograph Wax Stencil, No. 350	Per Quire	2.00	
Mimeograph Rotary Wax Stencil, No. 751	Per Quire	1.75	
Dermatype Stencil, No. 851	Per Quire	3.00	
Dermatype Stencil, No. 860	Per Quire	3.50	
Dermatype Stencil, No. 861	Per Quire	3.00	
Dermax Fluid	Per Bottle	.25	
Dermax Brushes	Each	.25	
Mimeograph Supplies (See Mimeo. Catalog)			
Note Books	Each	.05 & .10	
Oil	Per Bottle	.10	
Oilers, Perfect Pocket	Each	.30	
Ribbons, any Color	Each	.75	
Ribbons, Indellible	Each	.75	
Ribbons, Bichrome	Each	.75	
Ribbons, Indellible Bichrome	Each	.75	
Rubber Impression Strips	Each	.10	
Shuttle Arms	Each	1.00	
Shuttle Shields (Six Styles)	Each	.15	
Spools, Hard Rubber, Ribbon	Each	.25	
Type Shuttles, (See Type Catalog)	Each	3.00 & 3.50	
Special Characters on Shuttle		1.00	
Polished Oak Machine Case, regular size.	Each	6.00	
Carbon Ribbons	Each	.50	
Leather Traveling Case	Each	15.00	

POSTAGE EXTRA

Write for Complete Catalog of Typewriter Supplies.

BRANCHES

Boston, Mass.	101-111 Milk Street
Chicago, Ill.	189 West Madison St.
Detroit, Mich.	88 Griswold Street
New York, N. Y.	261 Broadway
Philadelphia, Pa.	208 South 11th Street
Pittsburgh, Pa.	Bessemer Building
Kansas City, Mo.	Reliance Bldg., 10th & McGee St.
St. Louis, Mo.	Victoria Building
Washington, D. C.	Colorado Building
San Francisco, Cal.	3 First Street
Indianapolis, Ind.	Law Building

British Isles Representative

The Hammond Typewriter Co., Ltd.

75 Queen Victoria Street

London, England